

**FIFTH
FOURTH AMENDMENT TO MASTER DEED**

THIS FOURTH AMENDMENT made this 12th day of May, 1995

BY: SKYVIEW DEVELOPERS, INC.
a New Jersey Corporation
having an office at
820 Morris Turnpike, Suite 301
Short Hills, New Jersey 07078

(herein referred to as "Grantor")

WHEREAS, Longview Estates filed in the Morris County Office in Deed Book 3137 at Page 0029 et. seq., the Master Deed and By-Laws relating to Longview at Montville, a Condominium; and

WHEREAS, Longview Estates filed a First Amendment to the Master Deed, which was recorded in the Morris County Clerk's Office on June 28, 1989 in Deed Book 3152 at Page 212; and

WHEREAS, Longview Estates filed a Second Amendment to the Master Deed, which was recorded in the Morris County Clerk's Office on December 8, 1989 in Deed Book 3223 at Page 156; and

WHEREAS, Longview Estates and Longview at Montville Association, Inc. filed a Third Amendment to the Master Deed, which was recorded in the Morris County Clerk's Office on December 24, 1990 in Deed Book 3384 at Page 054 et. seq. : and

WHEREAS, LongMont Holding Corp., as a Designated Transferee, in accordance with*

WHEREAS, the Master Deed and the Third Amendment to the Master Deed permits a successor Grantor to file an Amendment; and

WHEREAS, Skyview Developers, Inc. has become the successor Grantor as to the unsold Units; and

WHEREAS, Skyview Developers, Inc. as successor Grantor to Longview Estates, has the right to amend the Master Deed; and

WHEREAS, Skyview Developers, Inc. has obtained from the Township of Montville an approval relative to revised Site Plan so as to properly designate Units and also to change the layouts of certain Units and to add new Units' layout; and

WHEREAS, the Master Deed set forth dates in Article 6, relative to the Developer (Grantor) obtaining building permits; and

WHEREAS, Skyview Developers, Inc. wishes to revise such dates. *the provisions of the Master Deed filed a Fourth Amendment to the Master Deed which was recorded in the Morris County Clerk's Office on November 15, 1993 in Deed Book 3873 at page 136; and

Prepared BY: George Y. Sodowick

DB4223 P175

DB4189 P254

NOW, THEREFORE WITNESSETH

1. Article 6 of the Master Deed entitled "Ownership Estate and Percentage Interest" on Page 0046 of Book 3137 as filed in the Morris County Clerk's Office and as said Article was amended by the Third Amendment to the Master Deed which Amendment was recorded in Deed Book 3384 at Page 054 et. seq. , is further amended by the deletion of the sentence that commences with the words "However, the aforestated right" and ends with the words "for a unit in the Phase". The following sentences are substituted in place of the foregoing deletion:

However, the aforestated right shall expire (a) as to Phase II by December 31, 1996, if a building permit has not been issued for a Unit in Phase II; (b) as to Phase III by December 31, 1998 if a building permit has not been issued for a Unit in Phase III; (c) as to Phase IV by December 31, 2000 if a building permit has not been issued for a Unit in Phase XV; and (d) as to Phase V by December 31, 2002 if a building permit has not been issued for a Unit in Phase V. Skyview Developers, Inc. and any Designated Transferee shall have the sole right to change the aforesaid dates by filing an Amendment to this Master Deed, which amendment shall not require the consent of the Association or any Unit Owner(s) .

2. Section 5 in Article VI of the By-Laws as amended by the aforestated Third Amendment to the Master Deed which Section is entitled "Surrender of Control of Board of Trustees" is further amended as follows:

- a. The December 30, 1993 date on Page 055 in Book 3384 as filed in the Morris County Clerk's Office is changed to read December 31, 1996.
- b. The December 30, 1995 date on Page 055 in Book 3384 as filed in the Morris County Clerk's Office is changed to read December 31, 1998.
- c. The December 30, 1997 date on Page 055 in Book 3384 as filed in the Morris County Clerk's Office is changed to read December 31, 2000.
- d. The December 30, 1999 date on Page 055 in Book 3384 as filed in the Morris County Clerk's Office is changed to read December 31, 2002.

3. On line 11 of page 16 of the Master Deed which page is record in Deed Book 3137 at Page 0048 the name of the condominium association is Longview at Montville Association, Inc.

4. On page 73 of the Master Deed in Section 10.a. 1, which page is recorded in Deed Book 3137 at Page 0105 the correct name and address of the Grantor for notification purposes is:

Skyview Developers
820 Morris Turnpike
Suite 301
Short Hills, New Jersey 07078

5. On page 87 of the Master Deed in Section 31, which page is record in Deed Book 3137 at Page 0119 the following Exhibits are amended as follows:

- a. Exhibit B is deleted in its entirety and replaced by the following new Exhibit B:

"Exhibit B - Site plan prepared by Canger & Cassera, C.E. Parsippany, New Jersey dated July 18, 1985 and revised through March 9, 1995 entitled "Longview at Montville, a Condominium."

- b. Exhibit C is amended to include the following new plans:

"Architectural plans prepared by Solkin Group, Inc. architects dated March 21, 1995 for Units C-2 and C-3 consisting of eight sheets."

- c. Exhibit D is deleted in its entirety and replaced by the following new Exhibit D:

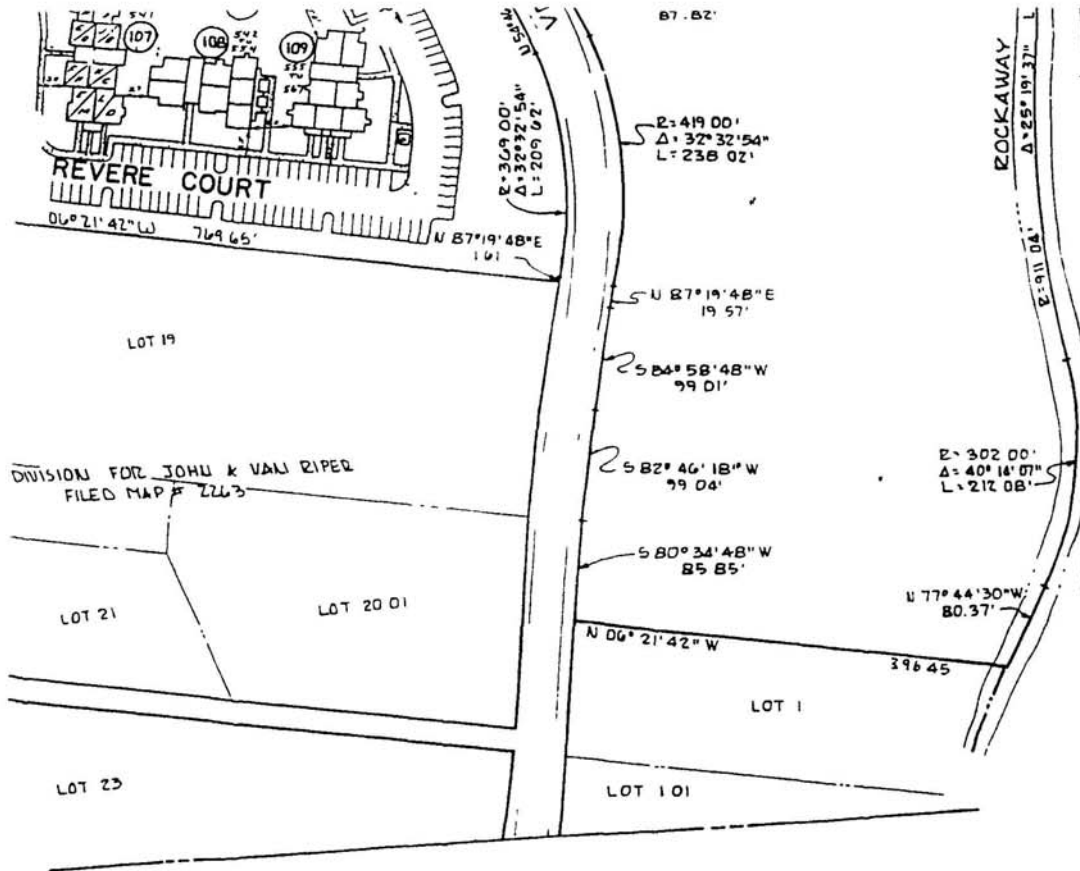
"Exhibit D - Chart entitled "Longview at Montville - Unit Percentage Interest."

IN WITNESS WHEREOF, the Grantor has executed this Fourth Amendment as of the above date.

DEPTEST
SKYVIEW
1994
NIC
Nicholas W. Minoia, Secretary

SKYVIEW DEVELOPERS, INC.

By Brian M. Stolar
Brian M. Stolar, Vice President



GENERAL NOTES

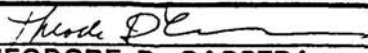

Property known as Lot 33 Block 52, located in the Township of Montville, Morris County, New Jersey, containing 104.47 acres.

The lands, buildings and other improvements are subject to the terms, conditions and provisions of the Master Deed and By-Laws of Longview at Montville, a Condominium.

The Street, Courts and Terraces shown within the development are not dedicated to the public.

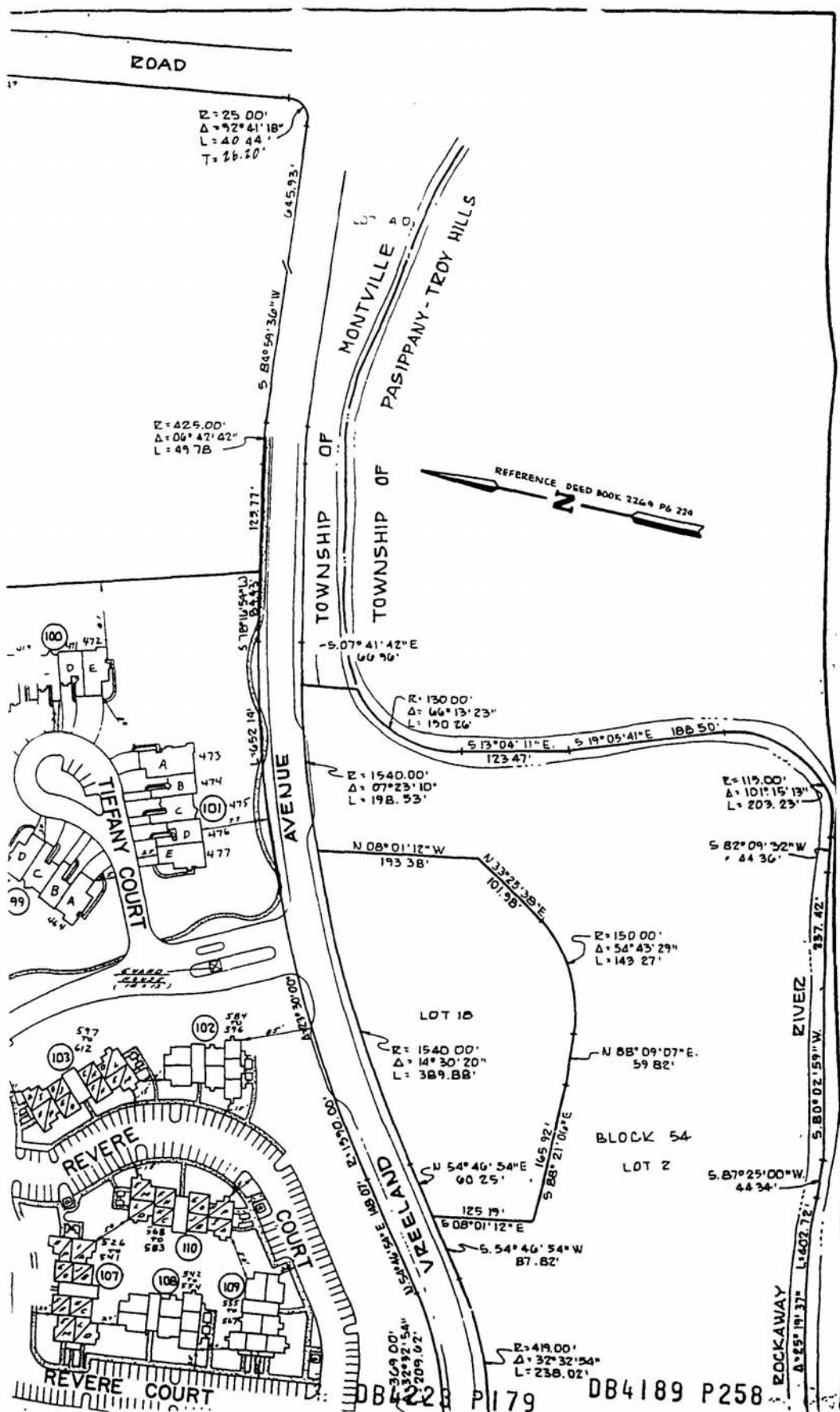
4. The Developer reserves the right to change the location of the buildings and improvements as actual topographical conditions and governmental requirements may dictate.
5. The Developer reserves the right to refile this "Survey Map/Site Plan" upon completion of construction to show actual locations. Such refiling shall not require the consent of any Unit Owners, mortgagees, or lending institutions.
6. This Plan is subject to all presently recorded easements and grants as well as any easements and grants to be recorded in the future.



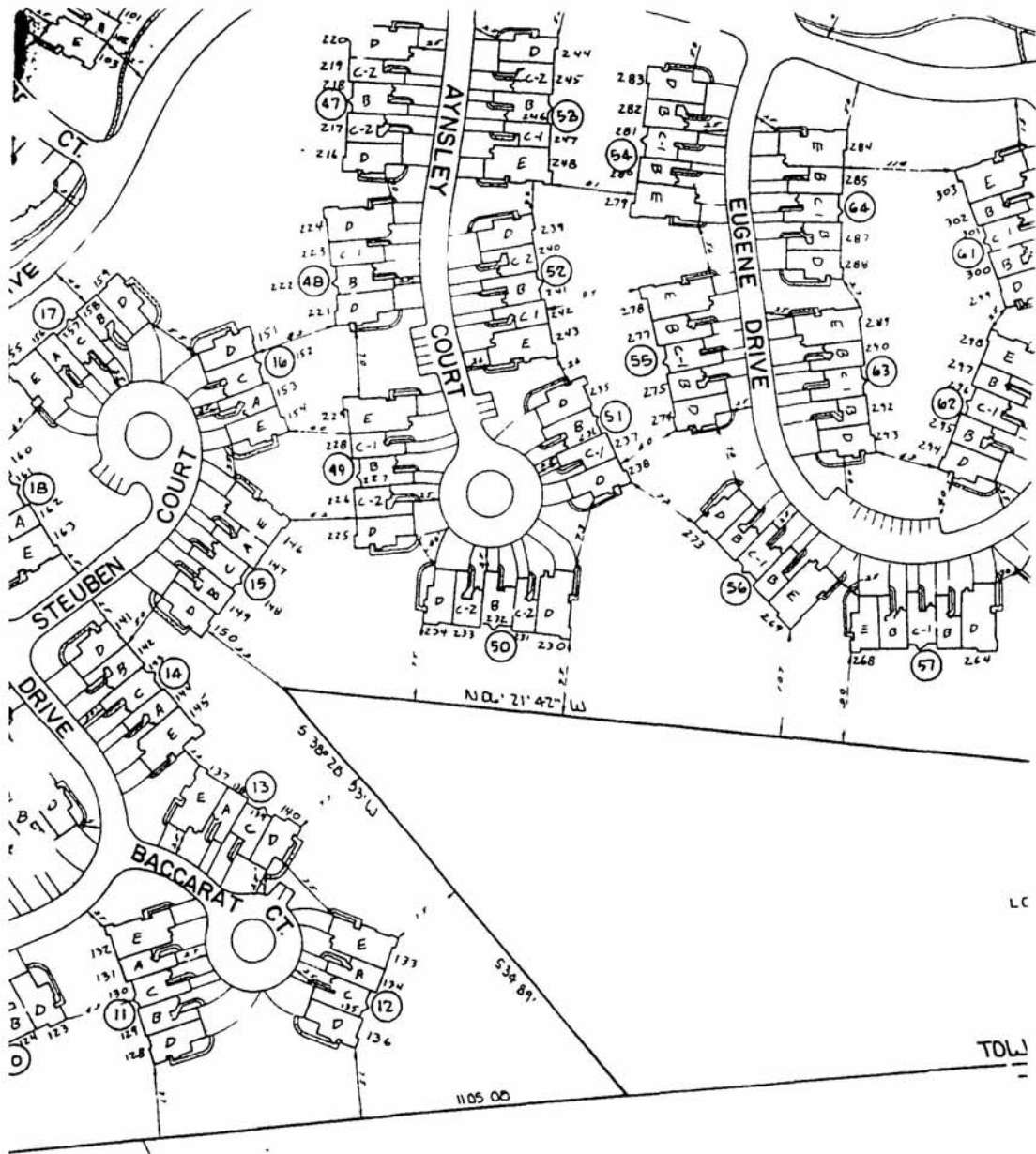
 THEODORE D. CASSERA		N.J.P.E. 22944	SURVEY MAP/SITE PLAN
 CANGER & CASSERA Consulting and Municipal Engineers 201-299-7970		TOWNSHIP OF MONTVILLE MORRIS COUNTY NEW JERSEY	
LONGVIEW @ MONTVILLE A CONDOMINIUM			
SCALE 1" = 100'	DATE JULY 18 1988	DESIGNED BY ORIGIN BY CHECKED BY PROJ. NO. FIELD BK.	19215A

DB4223 P178DB4189 P257

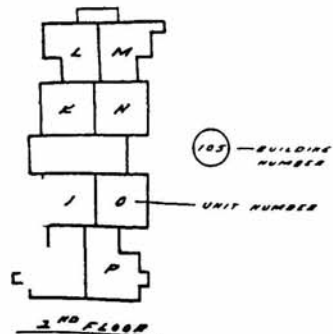
EXHIBIT **B**



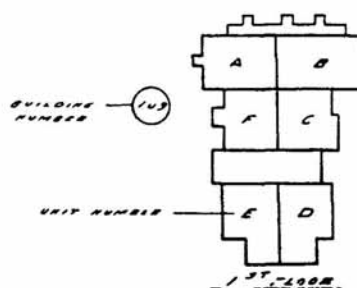




LOT 31



2ND FLOOR
N/MT LAUREL
BUILDING 103 THROUGH 104



1ST FLOOR
TYPICAL SENIOR CITIZEN (MT. LAUREL)
BUILDING - BUILDING # 103

DB4223 P181

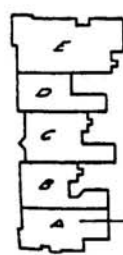
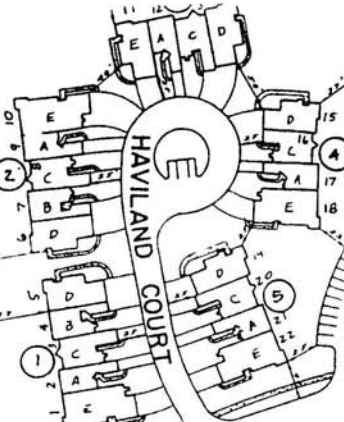
DB4189 P260

NEW JERSEY STATE HIGHWAY ROUTE 287

SKYLINE

516.9.01'

N 168° 01' 30" E



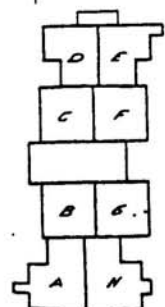
6 - BUILDING NUMB. 6

UNIT NUMBER

TYPICAL CONDO LEGEND
(BUILDINGS # 1 THRU 18.)

LOT 16

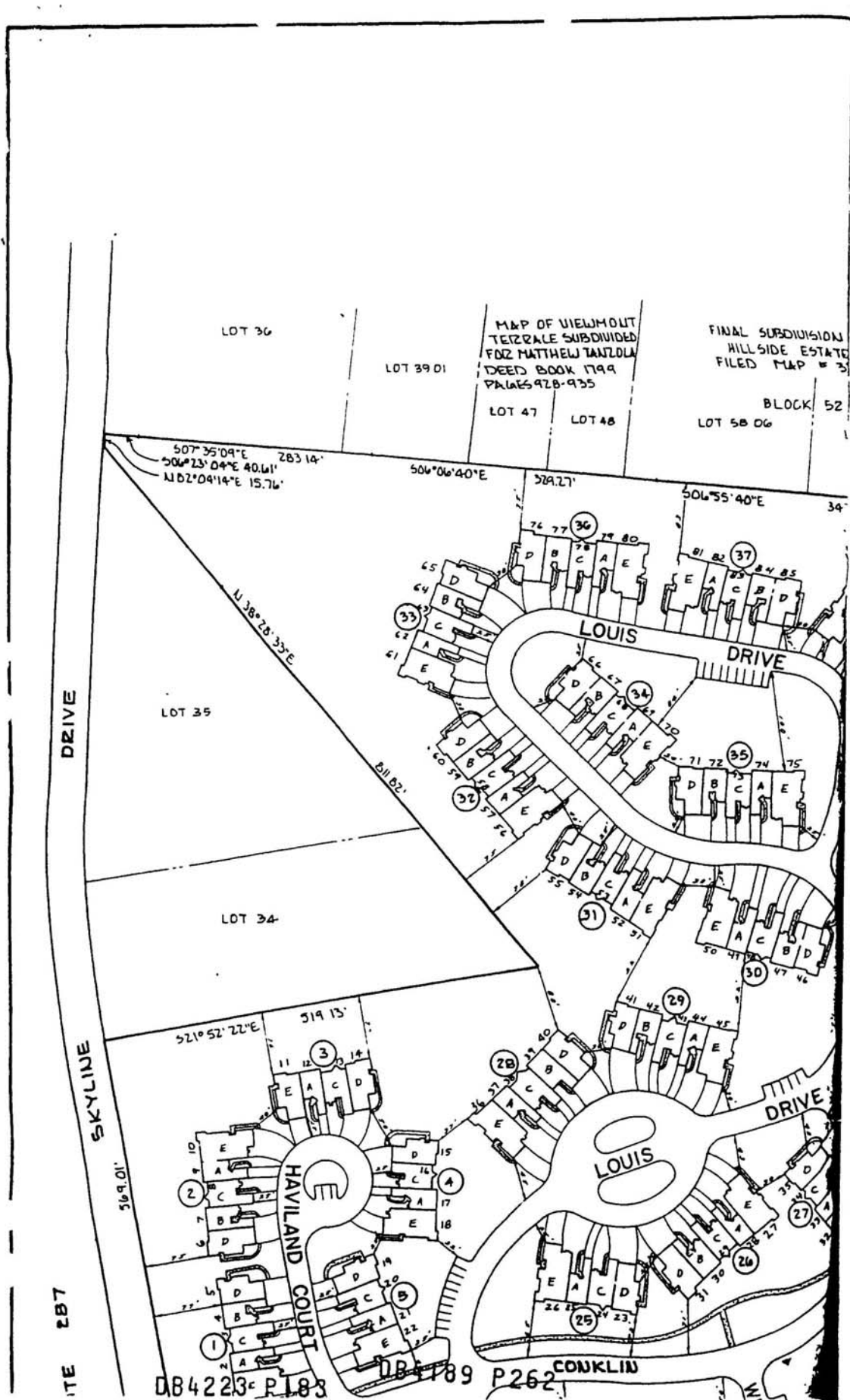
LOT 20



1ST FLOOR
TYPICAL SENIOR CITY
(16 UNIT BUILDING)

DB4189 P261

DB4223 P187



JOHN GREGOR INC.
Architect
1629 Walnut Street
Pittsburgh, PA 15222
Phone 482-2444
Fax 482-2444

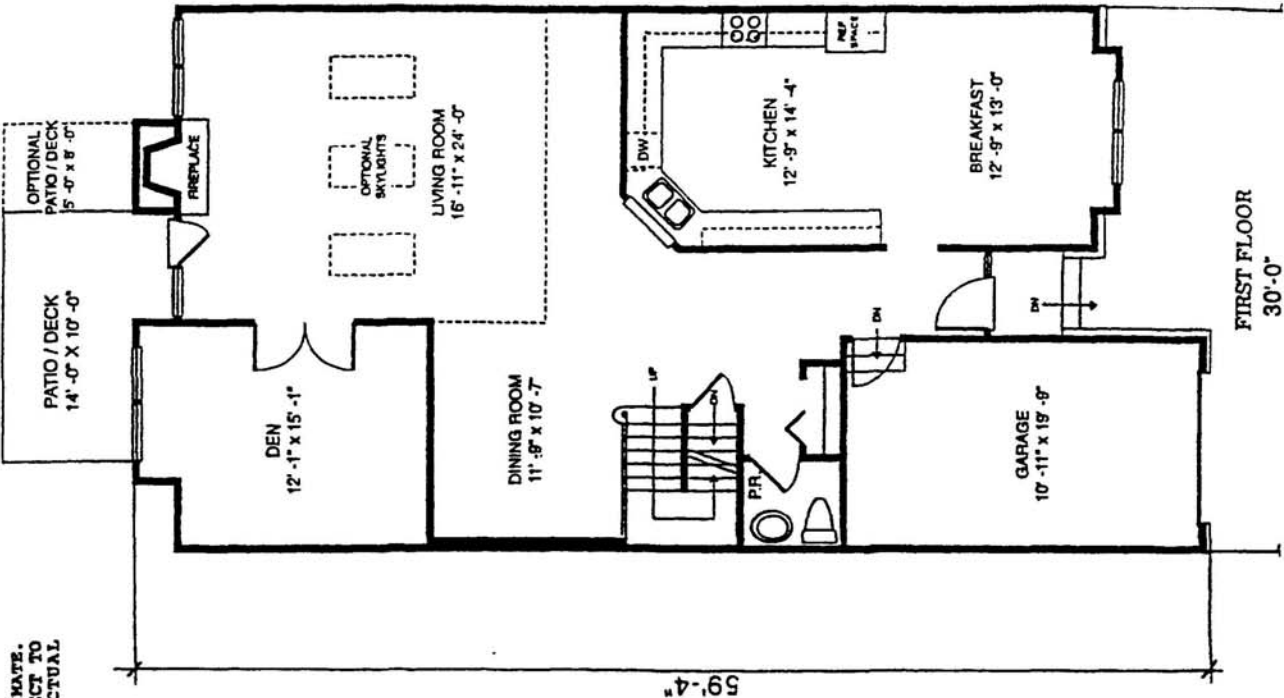


I HEREBY CERTIFY THAT THIS DIAGRAM
REPRESENTS A CORRECT REPRESENTATION
OF THE LAY-OUT AND DIMENSIONS OF THE
UNITS DESCRIBED.
SIGNED *[Signature]*
DATE 3.21.95

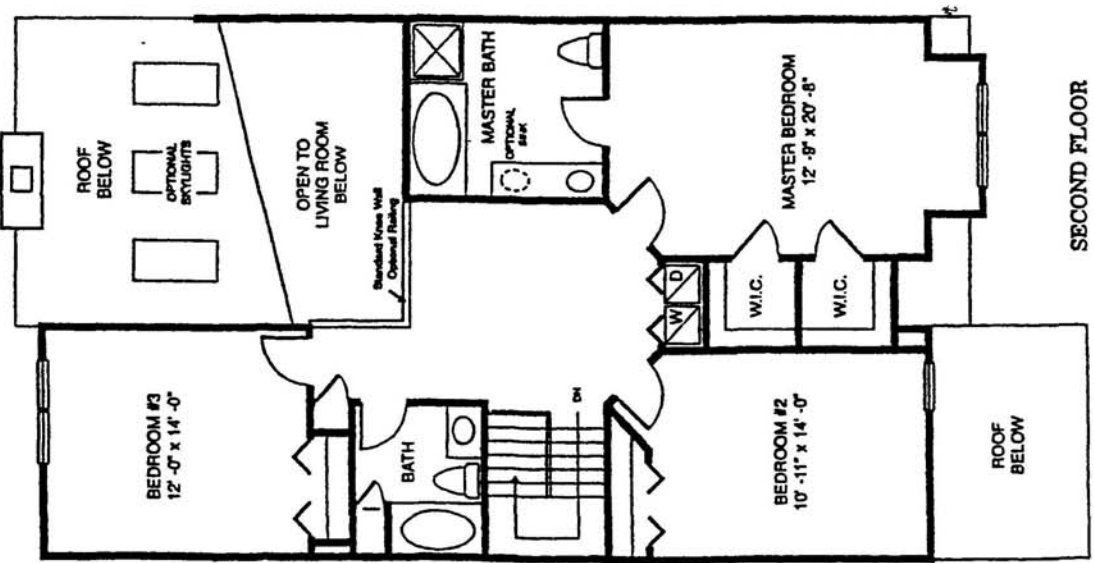
LONG VIEW
TOWNSHIP OF MONROVILLE
MONROE COUNTY, AL



UNIT C-2



ALL DIMENSIONS ARE APPROXIMATE.
PLANS AND SPECIFICATIONS SUBJECT TO
CHANGE BASED UPON ACTUAL
CONSTRUCTION.



NOT
 AND BEING
 RECORDED IN 1992
 FOR 143-10-10
 143-103-004



I HEREBY CERTIFY THAT THIS DIAGRAM
 REPRESENTS A CORRECT REPRESENTATION
 OF THE LAY-OUT AND DIMENSIONS OF THE
 UNITS DESCRIBED.

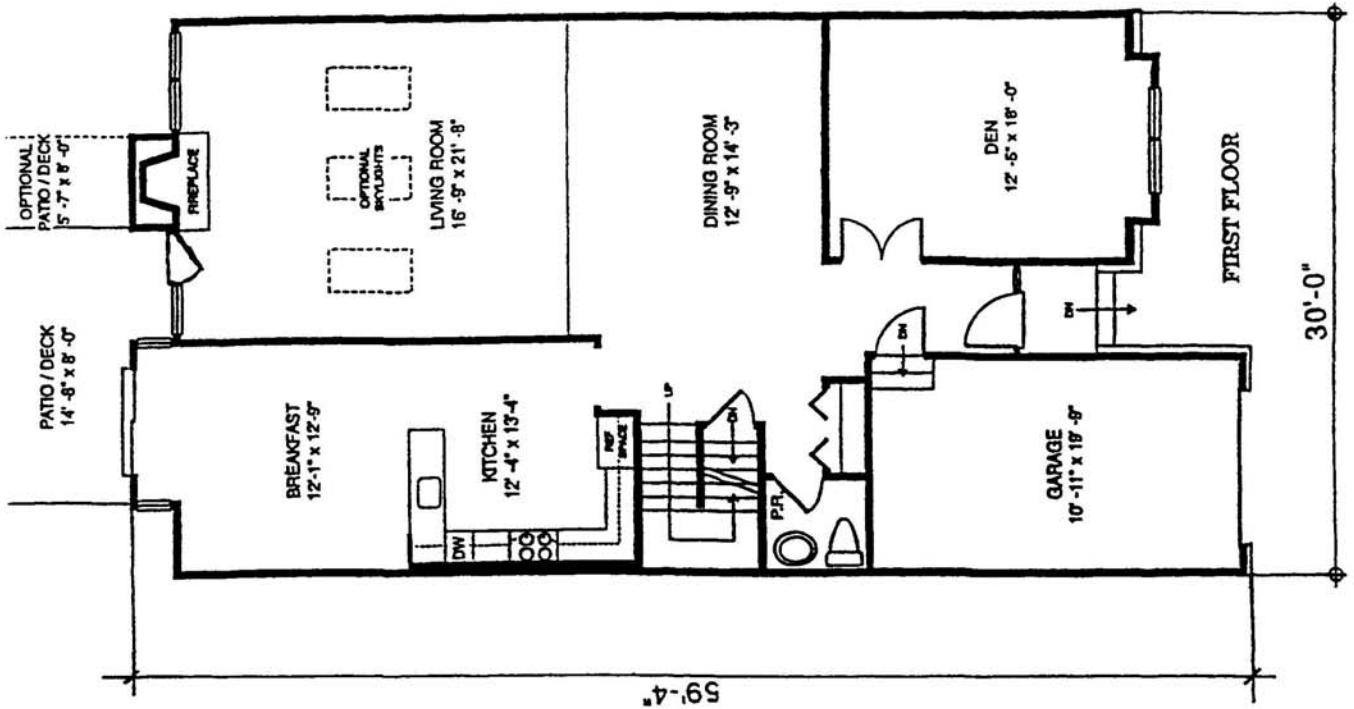
SIGNED

DATE

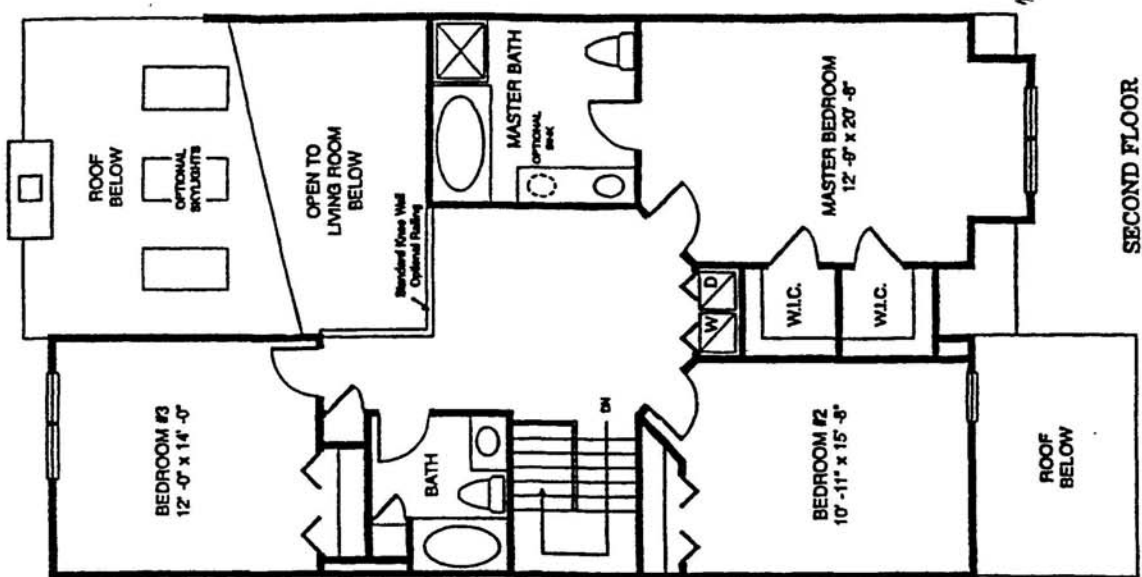
3.21.95



UNIT C-3



ALL DIMENSIONS ARE APPROXIMATE.
 PLANS AND SPECIFICATIONS SUBJECT TO
 CHANGE BASED UPON ACTUAL
 CONSTRUCTION.

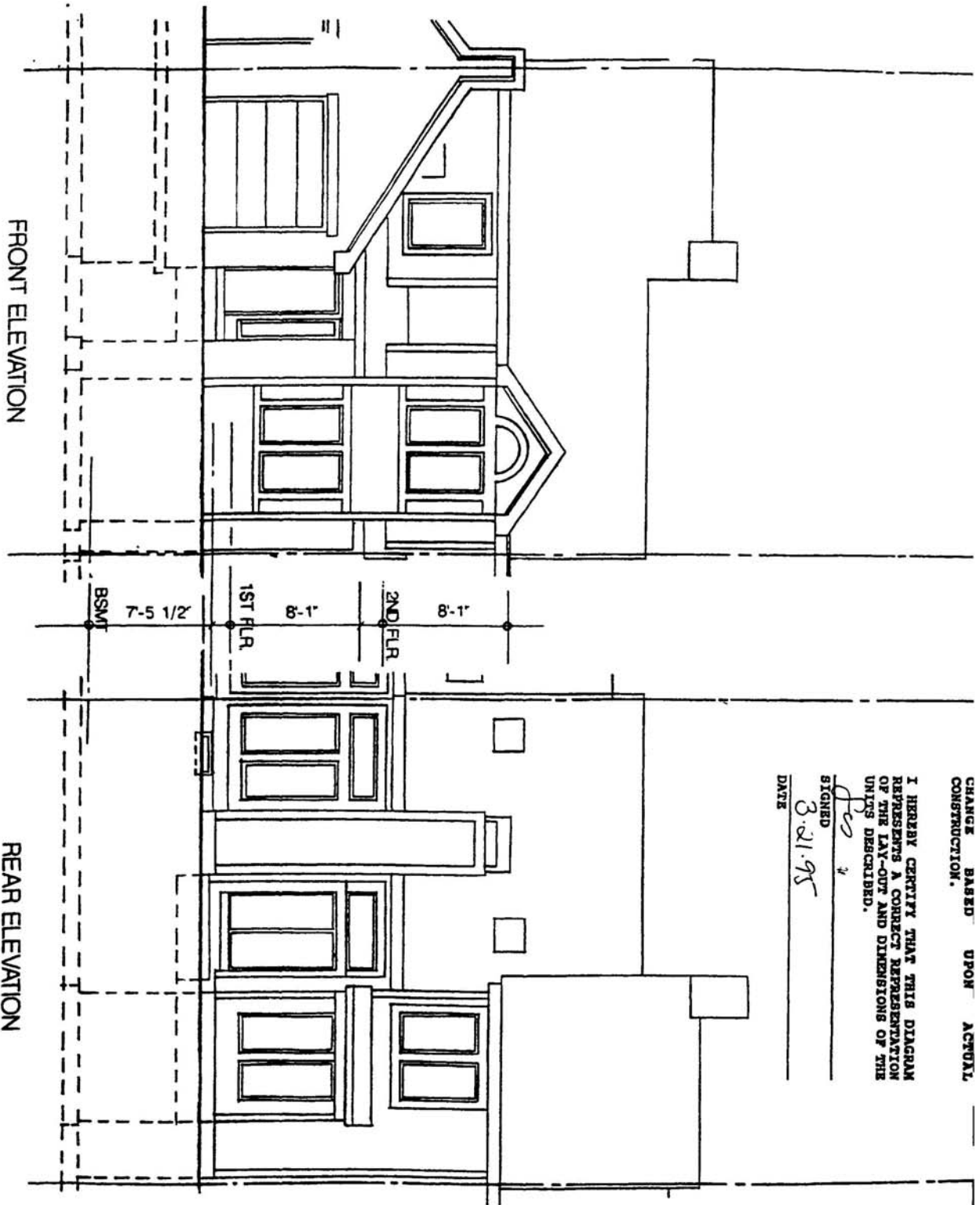


DR4223 P185

DB4189 P264

FRONT ELEVATION

REAR ELEVATION



CHANGE BASED UPON ACTUAL CONSTRUCTION.

I HEREBY CERTIFY THAT THIS DIAGRAM REPRESENTS A CORRECT REPRESENTATION OF THE LAY-OUT AND DIMENSIONS OF THE UNITS DESCRIBED.

SIGNED

3.21.95

DATE

SCARLETT GROUP INC.
Architects
and Planners
1515 Second Street
Baltimore, MD 21202
PH: 410.524.1200
FAX: 410.524.1201



DB4189, P267

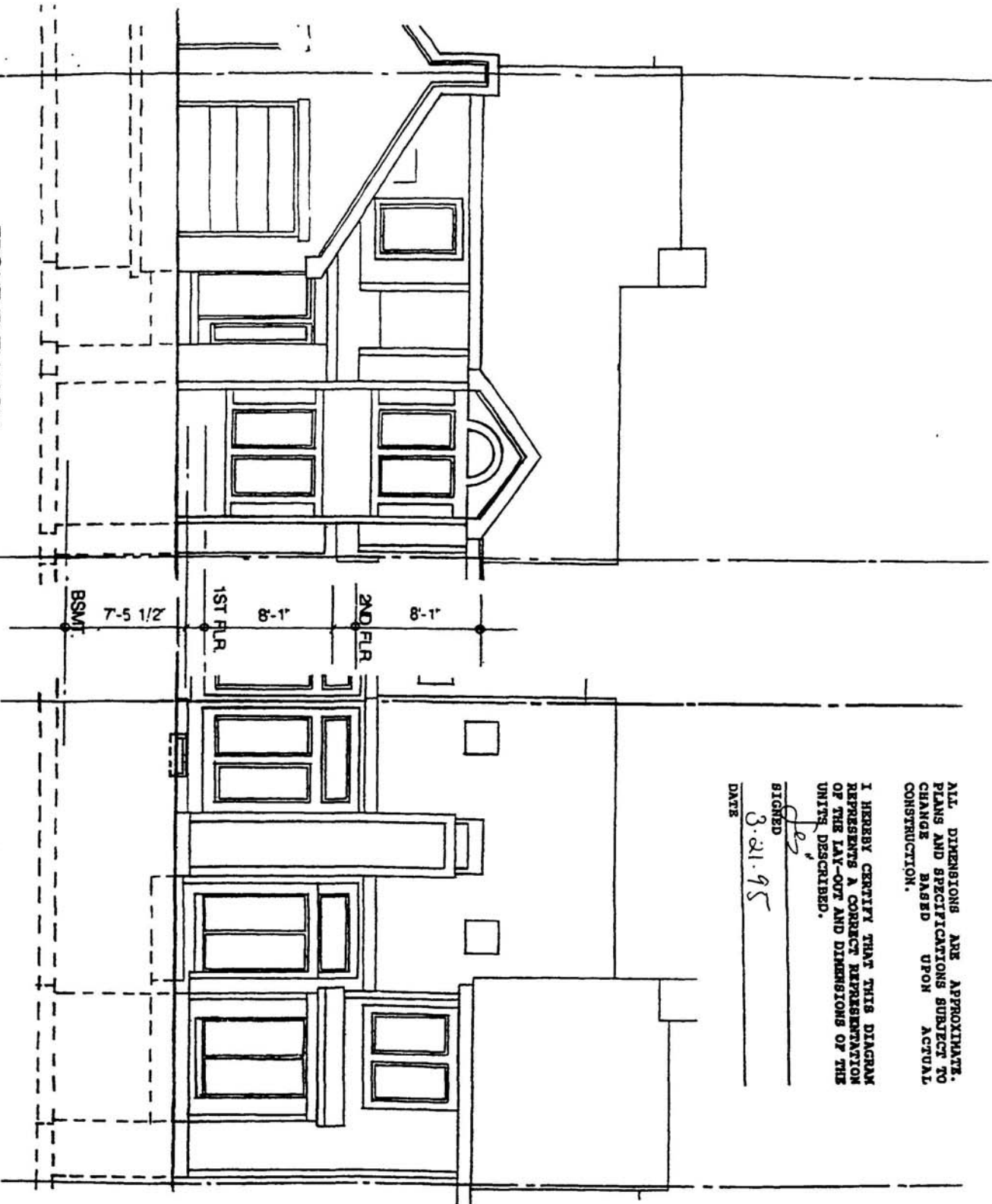
LONG VIEW
TOWNSHIP OF KORTALIS
KORTALIS COUNTY, NJ



0 4 8

FRONT ELEVATION

REAR ELEVATION



ALL DIMENSIONS ARE APPROXIMATE.
PLANS AND SPECIFICATIONS SUBJECT TO
CHANGE BASED UPON ACTUAL
CONSTRUCTION.

I HEREBY CERTIFY THAT THIS DIAGRAM
REPRESENTS A CORRECT REPRESENTATION
OF THE LAY-OUT AND DIMENSIONS OF THE
UNITS DESCRIBED.

SIGNED

3.21.95

DATE

COLON GROUP INC.
Architect
and Interior
Designers
1234 South Street
Newark, NJ 07102
Tel: 973-234-5678
Fax: 973-234-5679

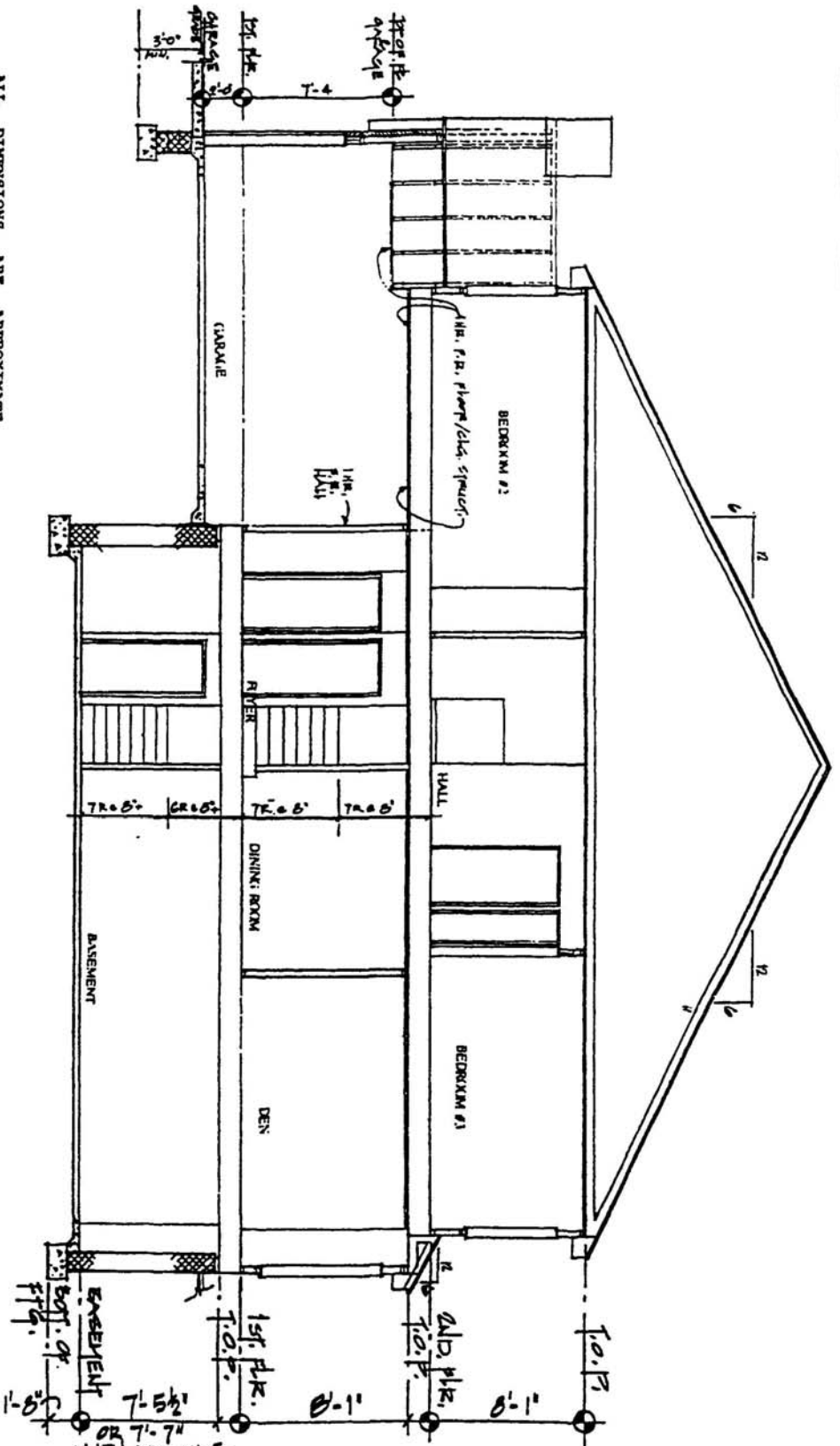


DB4189 P268

LONG VIEW
TOWNSHIP OF MONMOUTH
COUNTY, NJ
DB4223 P189

NOT TO SCALE

DB4189 P269



UNIT C-2 BUILDING SECTION

ALL DIMENSIONS ARE APPROXIMATE.
PLANS AND SPECIFICATIONS SUBJECT TO
CHANGE BASED UPON ACTUAL
CONSTRUCTION.

I HEREBY CERTIFY THAT THIS DIAGRAM
REPRESENTS A CORRECT REPRESENTATION
OF THE LAY-OUT AND DIMENSIONS OF THE
UNITS DESCRIBED.

SIGNED

3.21.95

DATE

LONG VIEW

TOWNSHIP OF MONTAIGNE
COUNTY, AL

UNIT C-2

GOLDEN GROUP INC.
Architect
and Planner
455 Walnut Street
Philadelphia, PA 19106
(215) 462-1000
FAX (215) 462-1001

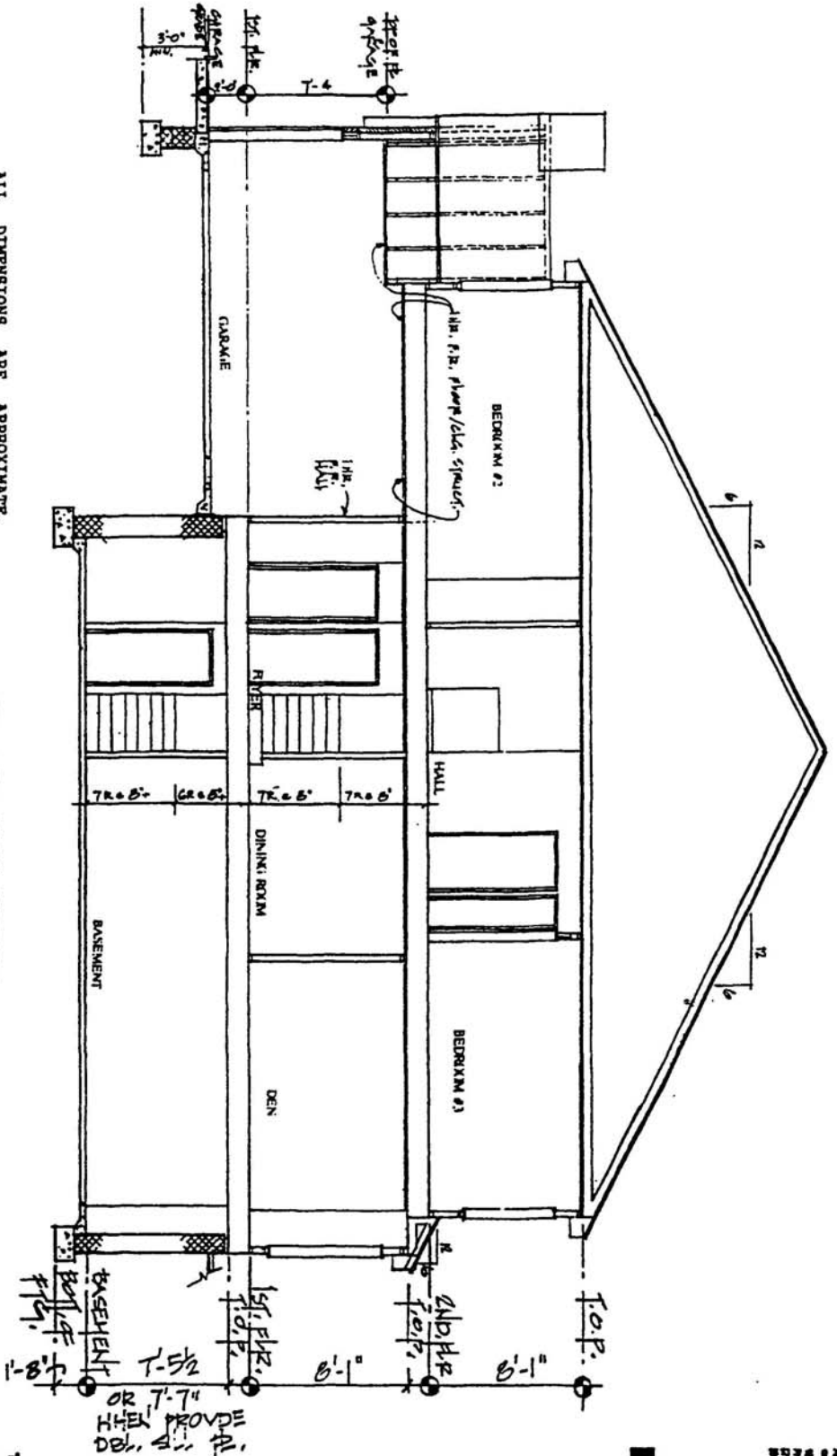


DB4189 P270

DB4223 P191

UNIT C-3

Project: **LONG VIEW**
TOWNSHIP OF MONTGOMERY
MONTGOMERY COUNTY, PA



UNIT C-3 BLDG SECTION

ALL DIMENSIONS ARE APPROXIMATE.
PLANS AND SPECIFICATIONS SUBJECT TO
CHANGE BASED UPON ACTUAL
CONSTRUCTION.

I HEREBY CERTIFY THAT THIS DIAGRAM
REPRESENTS A CORRECT REPRESENTATION
OF THE LAY-OUT AND DIMENSIONS OF THE
UNIT'S DESCRIBED.

SIGNED

3.21.95

DATE

LONGVIEW AT MONTVILLE-UNIT PERCENTAGE INTEREST OF OWNERSHIP
As At 5/22/95

PHASE I

<u>PHASE</u>	<u>UNIT #</u>	<u>BLDG</u>	<u>PHASE ONE UNIT LOCATION</u>	<u>ADDRESS</u>	<u>UNIT</u>	<u>SQUARE FEET</u>	<u>PHASE ONE %</u>	<u>PHASE TWO %</u>	<u>PHASE THREE %</u>	<u>PHASE FOUR %</u>	<u>PHASE FIVE %</u>
PHASE I	347	70	A	72 Waterford Drive	E	2602	0.8257%	0.4790%	0.3750%	0.2843%	0.2229%
PHASE I	346	70	B	70 Waterford Drive	A	1835	0.5823%	0.3378%	0.2644%	0.2005%	0.1572%
PHASE I	345	70	C	68 Waterford Drive	C	2223	0.7054%	0.4093%	0.3204%	0.2429%	0.1905%
PHASE I	344	70	D	66 Waterford Drive	B	1983	0.6292%	0.3651%	0.2858%	0.2166%	0.1699%
PHASE I	343	70	E	64 Waterford Drive	D	2622	0.8320%	0.4827%	0.3779%	0.2865%	0.2246%
PHASE I	352	75	A	10 Jesse Court	D	2622	0.8320%	0.4827%	0.3779%	0.2865%	0.2246%
PHASE I	351	75	B	8 Jesse Court	B	1983	0.6292%	0.3651%	0.2858%	0.2166%	0.1699%
PHASE I	350	75	C	6 Jesse Court	C	2223	0.7054%	0.4093%	0.3204%	0.2429%	0.1905%
PHASE I	349	75	D	4 Jesse Court	A	1835	0.5823%	0.3378%	0.2644%	0.2005%	0.1572%
PHASE I	348	75	E	2 Jesse Court	E	2602	0.8257%	0.4790%	0.3750%	0.2843%	0.2229%
PHASE I	357	76	A	28 Jesse Court	D	2622	0.8320%	0.4827%	0.3779%	0.2865%	0.2246%
PHASE I	356	76	B	26 Jesse Court	B	1983	0.6292%	0.3651%	0.2858%	0.2166%	0.1699%
PHASE I	355	76	C	24 Jesse Court	C	2223	0.7054%	0.4093%	0.3204%	0.2429%	0.1905%
PHASE I	354	76	D	22 Jesse Court	A	1835	0.5823%	0.3378%	0.2644%	0.2005%	0.1572%
PHASE I	353	76	E	20 Jesse Court	E	2602	0.8257%	0.4790%	0.3750%	0.2843%	0.2229%
PHASE I	362	77	A	40 Jesse Court	E	2602	0.8257%	0.4790%	0.3750%	0.2843%	0.2229%
PHASE I	361	77	B	38 Jesse Court	A	1835	0.5823%	0.3378%	0.2644%	0.2005%	0.1572%
PHASE I	360	77	C	36 Jesse Court	C	2223	0.7054%	0.4093%	0.3204%	0.2429%	0.1905%
PHASE I	359	77	D	34 Jesse Court	B	1983	0.6292%	0.3651%	0.2858%	0.2166%	0.1699%
PHASE I	358	77	E	32 Jesse Court	D	2622	0.8320%	0.4827%	0.3779%	0.2865%	0.2246%
PHASE I	367	78	A	50 Jesse Court	D	2622	0.8320%	0.4827%	0.3779%	0.2865%	0.2246%
PHASE I	366	78	B	48 Jesse Court	B	1983	0.6292%	0.3651%	0.2858%	0.2166%	0.1699%
PHASE I	365	78	C	46 Jesse Court	C	2223	0.7054%	0.4093%	0.3204%	0.2429%	0.1905%
PHASE I	364	78	D	44 Jesse Court	A	1835	0.5823%	0.3378%	0.2644%	0.2005%	0.1572%
PHASE I	363	78	E	42 Jesse Court	E	2602	0.8257%	0.4790%	0.3750%	0.2843%	0.2229%
PHASE I	372	79	A	60 Jesse Court	E	2602	0.8257%	0.4790%	0.3750%	0.2843%	0.2229%
PHASE I	371	79	B	58 Jesse Court	A	1835	0.5823%	0.3378%	0.2644%	0.2005%	0.1572%
PHASE I	370	79	C	56 Jesse Court	C	2223	0.7054%	0.4093%	0.3204%	0.2429%	0.1905%
PHASE I	369	79	D	54 Jesse Court	B	1983	0.6292%	0.3651%	0.2858%	0.2166%	0.1699%
PHASE I	368	79	E	52 Jesse Court	D	2622	0.8320%	0.4827%	0.3779%	0.2865%	0.2246%
PHASE I	377	80	A	70 Jesse Court	E	2602	0.8257%	0.4790%	0.3750%	0.2843%	0.2229%
PHASE I	376	80	B	68 Jesse Court	A	1835	0.5823%	0.3378%	0.2644%	0.2005%	0.1572%
PHASE I	375	80	C	66 Jesse Court	C	2223	0.7054%	0.4093%	0.3204%	0.2429%	0.1905%
PHASE I	374	80	D	64 Jesse Court	B	1983	0.6292%	0.3651%	0.2858%	0.2166%	0.1699%
PHASE I	373	80	E	62 Jesse Court	O	2622	0.8320%	0.4827%	0.3779%	0.2865%	0.2246%
PHASE I	382	81	A	80 Jesse Court	E	2602	0.8257%	0.4790%	0.3750%	0.2843%	0.2229%

EXHIBIT D

DB4189 P271

DB4223 P192

PHASE I	381	81	B	78 Jesse Court	A	1835	0.5823%	0.3378%	0.2644%	0.2005%	0.1572%
PHASE I	380	81	C	76 Jesse Court	C	2223	0.7054%	0.4093%	0.3204%	0.2420%	0.1005%
PHASE I	379	81	D	74 Jesse Court	B	1983	0.6292%	0.3651%	0.2858%	0.2166%	0.1600%
PHASE I	378	81	E	72 Jesse Court	D	2622	0.8320%	0.4827%	0.3779%	0.2865%	0.2246%
PHASE I	387	82	A	94 Jesse Court	D	2622	0.8320%	0.4827%	0.3779%	0.2885%	0.2246%
PHASE I	386	82	B	92 Jesse Court	B	1983	0.6292%	0.3651%	0.2858%	0.2166%	0.1600%
PHASE I	385	82	C	90 Jesse Court	C	2223	0.7054%	0.4093%	0.3204%	0.2420%	0.1005%
PHASE I	384	82	D	88 Jesse Court	A	1835	0.5823%	0.337,8%	0.2644%	0.2005%	0.1572%
PHASE I	383	82	E	66 Jesse Court	E	2602	0.8257%	0.4790%	0.3750%	0.2843%	0.2220%
PHASE I	392	83	A	104 Jesse Court	E	2602	0.8257%	0.4790%	0.3750%	0.2843%	0.2220%
PHASE I	391	83	B	102 Jesse Court	A	1835	0.5823%	0.3378%	0.2644%	0.2005%	0.1572%
PHASE I	390	83	C	100 Jesse Court	C	2223	0.7054%	0.4093%	0.3204%	0.2420%	0.1005%
PHASE I	389	83	D	98 Jesse Court	B	1983	0.6292%	0.3651%	0.2858%	0.2166%	0.1600%
PHASE I	388	83	E	96 Jesse Court	D	2622	0.8320%	0.4827%	0.3770%	0.2865%	0.2246%
PHASE I	397	84	A	101 Jesse Court	D	2622	0.8320%	0.4827%	0.3779%	0.2865%	0.2246%
PHASE I	396	84	B	103 Jesse Court	B	1983	0.6292%	0.3651%	0.2858%	0.2166%	0.1600%
PHASE I	395	84	C	105 Jesse Court	C	2223	0.7054%	0.4093%	0.3204%	0.2420%	0.1005%
PHASE I	394	84	D	107 Jesse Court	A	1835	0.5823%	0.3378%	0.2644%	0.2005%	0.1572%
PHASE I	393	84	E	109 Jesse Court	E	2602	0.8257%	0.4790%	0.3750%	0.2843%	0.2220%
PHASE I	402	85	A	87 Jesse Court	D	2622	0.8320%	0.4827%	0.3779%	0.2865%	0.2246%
PHASE I	401	85	B	89 Jesse Court	B	1983	0.6292%	0.3651%	0.2858%	0.2166%	0.1600%
PHASE I	400	85	C	91 Jesse Court	C	2223	0.7054%	0.4093%	0.3204%	0.2429%	0.1005%
PHASE I	399	85	D	93 Jesse Court	A	1835	0.5823%	0.3378%	0.2644%	0.2005%	0.1572%
PHASE I	398	85	E	95 Jesse Court	E	2602	0.8257%	0.4790%	0.3750%	0.2843%	0.2220%
PHASE I	407	86	A	77 Jesse Court	D	2622	0.8320%	0.4827%	0.3779%	0.2865%	0.2246%
PHASE I	406	86	B	79 Jesse Court	B	1983	0.6292%	0.3651%	0.2856%	0.2166%	0.1600%
PHASE I	405	86	C	81 Jesse Court	C	2223	0.7054%	0.4093%	0.3204%	0.2420%	0.1005%
PHASE I	404	86	D	83 Jesse Court	A	1835	0.5823%	0.3378%	0.2644%	0.2005%	0.1572%
PHASE I	403	86	E	85 Jesse Court	E	2602	0.8257%	0.4790%	0.3750%	0.2843%	0.2220%
PHASE I	411	87	A	51 Jesse Court	E	2602	0.8257%	0.4790%	0.3750%	0.2843%	0.2220%
PHASE I	410	87	B	53 Jesse Court	A	1835	0.5823%	0.3378%	0.2644%	0.2005%	0.1572%
PHASE I	409	87	C	55 Jesse Court	C	2223	0.7054%	0.4093%	0.3204%	0.2420%	0.1005%
PHASE I	408	87	D	57 Jesse Court	D	2622	0.8320%	0.4827%	0.3779%	0.2885%	0.2246%
PHASE I	416	88	A	27 Jesse Court	D	2622	0.8320%	0.4827%	0.3779%	0.2865%	0.2246%
PHASE I	415	86	B	29 Jesse Court	B	1983	0.6292%	0.3651%	0.2858%	0.2166%	0.1600%
PHASE I	414	88	C	31 Jesse Court	C	2223	0.7054%	0.4093%	0.3204%	0.2420%	0.1005%
PHASE I	413	88	D	33 Jesse Court	A	1835	0.5823%	0.3378%	0.2644%	0.2005%	0.1572%
PHASE I	412	88	E	35 Jesse Court	E	2602	0.8257%	0.4790%	0.3750%	0.2843%	0.2220%
PHASE I	421	89	A	11 Jesse Court	E	2602	0.8257%	0.4790%	0.3750%	0.2843%	0.2220%
PHASE I	420	89	B	15 Jesse Court	A	1835	0.5823%	0.3378%	0.2644%	0.2005%	0.1572%
PHASE I	419	89	C	17 Jesse Court	C	2223	0.7054%	0.4093%	0.3204%	0.2420%	0.1005%
PHASE I	418	89	D	19 Jesse Court	B	1983	0.6292%	0.3651%	0.2858%	0.2166%	0.1600%
PHASE I	417	89	E	21 Jesse Court	D	2622	0.8320%	0.4827%	0.3779%	0.2865%	0.2248%
PHASE I	426	90	A	1 Jesse Court	E	2602	0.8257%	0.4790%	0.3750%	0.2843%	0.2220%
PHASE I	425	90	B	3 Jesse Court	A	1835	0.5823%	0.3378%	0.2644%	0.2005%	0.1572%
PHASE I	424	90	C	5 Jesse Court	C	2223	0.7054%	0.4093%	0.3204%	0.2420%	0.1005%
PHASE I	423	90	D	7 Jesse Court	B	1983	0.6292%	0.3651%	0.2858%	0.2166%	0.1600%

PHASE I	422	90	E	9 Jesse Court	D	2622	0.8320%	0.4827%	0.3779%	0.2865%	0.2246%
PHASE I	431	91	A	9 Lenox Court	D	2622	0.8320%	0.4827%	0.3779%	0.2865%	0.2246%
PHASE I	430	91	B	7 Lenox Court	B	1983	0.6292%	0.3651%	0.2858%	0.2166%	0.1699%
PHASE I	429	91	C	5 Lenox Court	C	2223	0.7054%	0.4093%	0.3204%	0.2429%	0.1905%
PHASE I	428	91	D	3 Lenox Court	A	1835	0.5823%	0.3378%	0.2644%	0.2005%	0.1572%
PHASE I	427	91	E	1 Lenox Court	E	2602	0.8257%	0.4790%	0.3750%	0.2843%	0.2229%
PHASE I	436	92	A	37 Lenox Court	D	2622	0.8320%	0.4827%	0.3779%	0.2865%	0.2246%
PHASE I	435	92	B	35 Lenox Court	B	1983	0.6292%	0.3651%	0.2858%	0.2166%	0.1699%
PHASE I	434	92	C	33 Lenox Court	C	2223	0.7054%	0.4093%	0.3204%	0.2429%	0.1005%
PHASE I	433	92	D	31 Lenox Court	A	1835	0.5823%	0.3378%	0.2644%	0.2005%	0.1572%
PHASE I	432	92	E	29 Lenox Court	E	2602	0.8257%	0.4790%	0.3750%	0.2843%	0.2229%
PHASE I	440	93	A	45 Lenox Court	E	2602	0.8257%	0.4790%	0.3750%	0.2843%	0.2229%
PHASE I	439	93	B	43 Lenox Court	A	1835	0.5823%	0.3378%	0.2644%	0.2005%	0.1572%
PHASE I	438	93	C	41 Lenox Court	C	2223	0.7054%	0.4093%	0.3204%	0.2429%	0.1905%
PHASE I	437	93	D	39 Lenox Court	D	2622	0.8320%	0.4827%	0.3779%	0.2866%	0.2248%
PHASE I	444	94	A	53 Lenox Court	D	2622	0.8320%	0.4827%	0.3779%	0.2865%	0.2246%
PHASE I	443	94	B	51 Lenox Court	C	2223	0.7054%	0.4093%	0.3204%	0.2429%	0.1905%
PHASE I	442	94	C	49 Lenox Court	A	1835	0.5823%	0.3378%	0.2644%	0.2005%	0.1572%
PHASE I	441	94	D	47 Lenox Court	E	2602	0.8257%	0.4790%	0.3750%	0.2843%	0.2229%
PHASE I	445	95	A	38 Lenox Court	E	2602	0.8257%	0.4790%	0.3750%	0.2843%	0.2229%
PHASE I	446	95	B	36 Lenox Court	A	1835	0.5823%	0.3378%	0.2644%	0.2005%	0.1572%
PHASE I	447	95	C	34 Lenox Court	C	2223	0.7054%	0.4093%	0.3204%	0.2429%	0.1905%
PHASE I	448	95	D	32 Lenox Court	3	1983	0.6292%	0.3651%	0.2858%	0.2166%	0.1699%
PHASE I	449	95	E	30 Lenox Court	D	2622	0.8320%	0.4827%	0.3779%	0.2865%	0.2246%
PHASE I	450	96	A	28 Lenox Court	D	2622	0.8320%	0.4827%	0.3779%	0.2865%	0.2246%
PHASE I	451	96	B	26 Lenox Court	C	2223	0.7054%	0.4093%	0.3204%	0.2429%	0.1905%
PHASE I	452	96	C	24 Lenox Court	A	1835	0.5823%	0.3378%	0.2644%	0.2005%	0.1572%
PHASE I	453	96	D	22 Lenox Court	E	2602	0.8257%	0.4790%	0.3750%	0.2843%	0.2229%
PHASE I	454	97	A	20 Lenox Court	E	2602	0.8257%	0.4790%	0.3750%	0.2843%	0.2229%
PHASE I	455	97	B	18 Lenox Court	A	1835	0.5823%	0.3378%	0.2644%	0.2005%	0.1572%
PHASE I	456	97	C	16 Lenox Court	C	2223	0.7054%	0.4093%	0.3204%	0.2429%	0.1905%
PHASE I	457	97	D	14 Lenox Court	B	1983	0.6292%	0.3651%	0.2858%	0.2168%	0.1699%
PHASE I	458	97	E	12 Lenox Court	D	2622	0.8320%	0.4827%	0.3779%	0.2865%	0.2246%
PHASE I	459	98	A	10 Lenox Court	D	2622	0.8320%	0.4827%	0.3779%	0.2865%	0.2246%
PHASE I	460	98	B	8 Lenox Court	B	1983	0.6292%	0.3651%	0.2858%	0.2166%	0.1699%
PHASE I	461	98	C	6 Lenox Court	C	2223	0.7054%	0.4093%	0.3204%	0.2429%	0.1905%
PHASE I	462	98	D	4 Lenox Court	A	1835	0.5823%	0.3378%	0.2644%	0.2005%	0.1572%
PHASE I	463	98	E	2 Lenox Court	E	2602	0.8257%	0.4790%	0.3750%	0.2843%	0.2229%
PHASE I	464	99	A	1 Tiffany Court	D	2622	0.8320%	0.4827%	0.3779%	0.2865%	0.2246%
PHASE I	465	99	B	3 Tiffany Court	C	2223	0.7054%	0.4093%	0.3204%	0.2429%	0.1905%
PHASE I	466	99	C	5 Tiffany Court	A	1835	0.5823%	0.3378%	0.2644%	0.2005%	0.1572%
PHASE I	467	99	D	7 Tiffany Court	E	2602	0.8257%	0.4790%	0.3750%	0.2843%	0.2229%
PHASE I	466	100	A	9 Tiffany Court	E	2602	0.8320%	0.4790%	0.3750%	0.2843%	0.2229%
PHASE I	469	100	B	11 Tiffany Court	A	1835	0.6292%	0.3378%	0.2644%	0.2005%	0.1572%
PHASE I	470	100	C	15 Tiffany Court	C	2223	0.7054%	0.4093%	0.3204%	0.2429%	0.1905%
PHASE I	471	100	D	17 Tiffany Court	B	1983	0.5823%	0.3651%	0.2858%	0.2166%	0.1699%
PHASE I	472	100	E	19 Tiffany Court	D	2622	0.8257%	0.4827%	0.3779%	0.2865%	0.2246%

PHASE I	473	101	A	10 Tiffany Court	E	2602	0.8257%	0.4790%	0.3750%	0.2843%	0.2220%
PHASE I	474	101	B	8 Tiffany Court	A	1835	0.5823%	0.3378%	0.2644%	0.2005%	0.1572%
PHASE I	475	101	C	6 Tiffany Court	C	2223	0.7054%	0.4093%	0.3204%	0.2429%	0.1905%
PHASE I	476	101	D	4 Tiffany Court	B	1983	0.6292%	0.3651%	0.2858%	0.2166%	0.1690%
PHASE I	477	101	E	2 Tiffany Court	D	2622	0.8320%	0.4827%	0.3779%	0.2885%	0.2246%
PHASE I	568	C110		95 Revere Court.	C	668	0.2120%	0.1250%	0.0963%	0.0730%	0.0572%
PHASE I	569	C110		96 Revere Court.	B	537	0.1704%	0.0989%	0.0774%	0.0587%	0.0460%
PHASE I	570	C110		97 Revere Court.	B	537	0.1704%	0.0989%	0.0774%	0.0587%	0.0460%
PHASE I	571	C110		98 Revere Court.	C	668	0.2120%	0.1230%	0.0963%	0.0730%	0.0572%
PHASE I	572	C110		99 Revere Court.	C	668	0.2120%	0.1230%	0.0963%	0.0730%	0.0572%
PHASE I	573	C110		100 Revere Court.	B	537	0.1704%	0.0989%	0.0774%	0.0587%	0.0460%
PHASE I	574	C110		101 Revere Court.	B	537	0.1704%	0.0989%	0.0774%	0.0587%	0.0460%
PHASE I	575	C110		102 Revere Court.	C	668	0.2120%	0.1230%	0.0963%	0.0730%	0.0572%
PHASE I	576	C110		103 Revere Court.	C	668	0.2120%	0.1230%	0.0963%	0.0730%	0.0572%
PHASE I	577	C110		104 Revere Court.	B	537	0.1704%	0.0989%	0.0774%	0.0587%	0.0460%
PHASE I	578	C110		103 Revere Court.	B	537	0.1704%	0.0989%	0.0774%	0.0587%	0.0460%
PHASE I	579	C110		106 Revere Court.	C	668	0.2120%	0.1230%	0.0963%	0.0730%	0.0572%
PHASE I	580	C110		107 Revere Court.	C	668	0.2120%	0.1230%	0.0963%	0.0730%	0.0572%
PHASE I	581	C110		108 Revere Court.	B	537	0.1704%	0.0989%	0.0774%	0.0587%	0.0460%
PHASE I	582	C110		109 Revere Court.	B	537	0.1704%	0.0989%	0.0774%	0.0587%	0.0460%
PHASE I	583	C110		110 Revere Court.	C	668	0.2120%	0.1230%	0.0963%	0.0730%	0.0572%
						303880	100.0020%	55.9463%	43.7917%	33.1987%	26.0360%

PHASE II

PHASE	NEW UNIT #	BLDG#	ADDRESS	UNIT TYPE	SQUARE FEET	PHASE ONE %	PHASE TWO %	PHASE THREE %	PHASE FOUR %	PHASE FIVE %
PHASE II	279	54	10 Eugene Drive	E	2602	N/A	0.4790%	0.3750%	0.2843%	0.2229%
PHASE II	280	54	8 Eugene Drive	B	1983	N/A	0.3651%	0.2858%	0.2166%	0.1699%
PHASE II	281	54	6 Eugene Drive	C-3	2478	N/A	0.4562%	0.3571%	0.2707%	0.2123%
PHASE II	282	54	4 Eugene Drive	B	1983	N/A	0.3651%	0.2858%	0.2166%	0.1699%
PHASE II	283	54	2 Eugene Drive	D	2622	N/A	0.4827%	0.3779%	0.2865%	0.2246%
PHASE II	274	55	20 Eugene Drive	D	2622	N/A	0.4827%	0.3779%	0.2865%	0.2246%
PHASE II	275	55	16 Eugene Drive	B	1983	N/A	0.3651%	0.2858%	0.2166%	0.1699%
PHASE II	276	55	16 Eugene Drive	C-3	2478	N/A	0.4562%	0.3571%	0.2707%	0.2123%
PHASE II	277	55	14 Eugene Drive	B	1983	N/A	0.3651%	0.2858%	0.2166%	0.1699%
PHASE II	278	55	12 Eugene Drive	E	2602	N/A	0.4790%	0.3750%	0.2843%	0.2229%
PHASE II	269	56	32 Eugene Drive	E	2602	N/A	0.4790%	0.3750%	0.2843%	0.2229%
PHASE II	270	56	30 Eugene Drive	B	1983	N/A	0.3651%	0.2858%	0.2166%	0.1699%
PHASE II	271	56	28 Eugene Drive	C-2	2478	N/A	0.4562%	0.3571%	0.2707%	0.2123%
PHASE II	272	56	26 Eugene Drive	B	1983	N/A	0.3651%	0.2858%	0.2166%	0.1699%
PHASE II	273	56	24 Eugene Drive	D	2622	N/A	0.4827%	0.3779%	0.2865%	0.2246%
PHASE II	264	57	42 Eugene Drive	D	2622	N/A	0.4827%	0.3779%	0.2865%	0.2246%

PHASE II	265	57	40 Eugene Drive	B	1983	N/A	0.3651%	0.2858%	0.2166%	0.1690%
PHASE II	266	57	38 Eugene Drive	C-2	2478	N/A	0.4562%	0.3571%	0.2707%	0.2123%
PHASE II	267	57	36 Eugene Drive	B	1983	N/A	0.3651%	0.2858%	0.2166%	0.1699%
PHASE II	268	57	34 Eugene Drive	E	2602	N/A	0.4790%	0.3750%	0.2843%	0.2229%
PHASE II	259	58	52 Eugene Drive	E	2602	N/A	0.47^0%	0.3750%	0.2843%	0.2229%
PHASE II	260	58	50 Eugene Drive	B	1983	N/A	0.3651%	0.2858%	0.2166%	0.1699%
PHASE II	261	58	48 Eugene Drive	C-1	2316	N/A	0.4264%	0.3338%	0.2530%	0.1064%
PHASE II	262	58	46 Eugene Drive	B	1983	N/A	0.3651%	0.2858%	0.2166%	0.1690%
PHASE II	263	58	44 Eugene Drive	D	2622	N/A	0.4827%	0.3779%	0.2865%	0.2246%
PHASE II	254	59	62 Eugene Drive	D	2622	N/A	0.4827%	0.3779%	0.2865%	0.2246%
PHASE II	255	59	60 Eugene Drive	B	1983	N/A	0.3651%	0.2858%	0.2166%	0.1600%
PHASE II	256	59	58 Eugene Drive	C-2	2478	N/A	0.4562%	0.3571%	0.2707%	0.2123%
PHASE II	257	59	56 Eugene Drive	B	1983	N/A	0.3651%	0.2858%	0.2166%	0.1600%
PHASE II	258	59	54 Eugene Drive	E	2602	N/A	0.4790%	0.3750%	0.2843%	0.2220%
PHASE II	249	60	72 Eugene Drive	E	2602	N/A	0.4790%	0.3750%	0.2843%	0.2220%
PHASE II	250	60	70 Eugene Drive	B	1983	N/A	0.3651%	0.2858%	0.2166%	0.1600%
PHASE II	251	60	68 Eugene Drive	C-2	2478	N/A	0.4562%	0.3571%	0.2707%	0.2123%
PHASE II	252	60	66 Eugene Drive	B	1983	N/A	0.3651%	0.2858%	0.2166%	0.1600%
PHASE II	253	60	64 Eugene Drive	D	2622	N/A	0.4827%	0.3779%	0.2865%	0.2246%
PHASE II	299	61	63 Eugene Drive	D	2622	N/A	0.4827%	0.3779%	0.2865%	0.2246%
PHASE II	300	61	65 Eugene Drive	B	1983	N/A	0.3651%	0.2858%	0.2166%	0.1600%
PHASE II	301	61	67 Eugene Drive	C-2	2478	N/A	0.4562%	0.3571%	0.2707%	0.2123%
PHASE II	302	61	69 Eugene Drive	B	1983	N/A	0.3651%	0.2858%	0.2166%	0.1600%
PHASE II	303	61	71 Eugene Drive	E	2602	N/A	0.4790%	0.3750%	0.2843%	0.2220%
PHASE II	294	62	47 Eugene Drive	D	2622	N/A	0.4827%	0.3779%	0.2865%	0.2246%
PHASE II	295	62	49 Eugene Drive	B	1983	N/A	0.3651%	0.2858%	0.2166%	0.1600%
PHASE II	296	62	51 Eugene Drive	C-3	2478	N/A	0.4562%	0.3571%	0.2707%	0.2123%
PHASE II	297	62	53 Eugene Drive	B	1983	N/A	0.3651%	0.2858%	0.2166%	0.1600%
PHASE II	298	62	55 Eugene Drive	E	2602	N/A	0.4790%	0.3750%	0.2843%	0.2220%
PHASE II	289	63	15 Eugene Drive	E	2602	N/A	0.4790%	0.3750%	0.2843%	0.2220%
PHASE II	290	63	17 Eugene Drive	B	1983	N/A	0.3651%	0.2858%	0.2168%	0.1600%
PHASE II	291	63	19 Eugene Drive	C-2	2478	N/A	0.4562%	0.3571%	0.2707%	0.2123%
PHASE II	292	63	21 Eugene Drive	B	1983	N/A	0.3651%	0.2658%	0.2166%	0.1600%
PHASE II	293	63	23 Eugene Drive	D	2622	N/A	0.4827%	0.3779%	0.2865%	0.2246%
PHASE II	284	64	3 Eugene Drive	E	2602	N/A	0.4790%	0.3750%	0.2843%	0.2220%
PHASE II	285	64	5 Eugene Drive	B	1983	N/A	0.3651%	0.2858%	0.2166%	0.1600%
PHASE II	286	64	7 Eugene Drive	C-1	2316	N/A	0.4264%	0.3338%	0.2530%	0.1084%
PHASE II	287	64	9 Eugene Drive	B	1983	N/A	0.3651%	0.2058%	0.2166%	0.1600%
PHASE II	288	64	11 Eugene Drive	D	2622	N/A	0.4827%	0.3779%	0.2865%	0.2246%
PHASE II	304	65	9 Waterford Drive	D	2622	N/A	0.4827%	0.3779%	0.2865%	0.2246%
PHASE II	305	65	11 Waterford Drive	C-1	2316	N/A	0.4264%	0.3338%	0.2530%	0.1084%
PHASE II	306	65	15 Waterford Drive	B	1983	N/A	0.3651%	0.2858%	0.2166%	0.1600%
PHASE II	307	65	17 Waterford Drive	E	2602	N/A	0.4790%	0.3750%	0.2843%	0.2220%
PHASE II	308	66	19 Waterford Drive	E	2602	N/A	0.4790%	0.3750%	0.2843%	0.2220%
PHASE II	309	66	21 Waterford Drive	B	1983	N/A	0.3651%	0.2858%	0.2166%	0.1600%
PHASE II	310	66	23 Waterford Drive	C-2	2478	N/A	0.4562%	0.3571%	0.2707%	0.2123%
PHASE II	311	66	25 Waterford Drive	B	1983	N/A	0.3651%	0.2858%	0.2166%	0.1600%

PHASE III	215	46	2 Laliue Drive	D	2622	N/A	N/A	0.3779%	0.2865%	0.2246%
PHASE III	216	47	10 Aynsley Court	D	2622	N/A	N/A	0.3779%	0.2865%	0.2246%
PHASE III	217	47	8 Aynsley Court	C-2	2478	N/A	N/A	0.3571%	0.2707%	0.2123%
PHASE III	218	47	6 Aynsley Court	B	1983	N/A	N/A	0.2858%	0.2166%	0.1699%
PHASE III	219	47	4 Aynsley Court	C-2	2478	N/A	N/A	0.3571%	0.2707%	0.2123%
PHASE III	220	47	2 Aynsley Court	D	2622	N/A	N/A	0.3779%	0.2865%	0.2246%
PHASE III	221	48	18 Aynsley Court	D	2622	N/A	N/A	0.3779%	0.2865%	0.2246%
PHASE III	222	48	16 Aynsley Court	B	1983	N/A	N/A	0.2858%	0.2166%	0.1600%
PHASE III	223	48	14 Aynsley Court	C-1	2316	N/A	N/A	0.3338%	0.2530%	0.1084%
PHASE III	224	48	12 Aynsley Court	D	2622	N/A	N/A	0.3779%	0.2865%	0.2246%
PHASE III	225	49	28 Aynsley Court	D	2622	N/A	N/A	0.3779%	0.2865%	0.2246%
PHASE III	226	49	26 Aynsley Court	C-2	2478	N/A	N/A	0.3571%	0.2707%	0.2123%
PHASE III	227	49	24 Aynsley Court	B	1983	N/A	N/A	0.2858%	0.2166%	0.1600%
PHASE III	228	49	22 Aynsley Court	C-1	2316	N/A	N/A	0.3338%	0.2530%	0.1084%
PHASE III	229	49	20 Aynsley Court	E	2602	N/A	N/A	0.3750%	0.2843%	0.2220%
PHASE III	230	50	31 Aynsley Court	D	2622	N/A	N/A	0.3779%	0.2865%	0.2246%
PHASE III	231	50	33 Aynsley Court	C-2	2478	N/A	N/A	0.3571%	0.2707%	0.2123%
PHASE III	232	50	35 Aynsley Court	B	1983	N/A	N/A	0.2858%	0.2166%	0.1600%
PHASE III	233	50	37 Aynsley Court	C-2	2478	N/A	N/A	0.3571%	0.2707%	0.2123%
PHASE III	234	50	39 Aynsley Court	D	2622	N/A	N/A	0.3779%	0.2865%	0.2246%
PHASE III	235	51	23 Aynsley Court	D	2622	N/A	N/A	0.3779%	0.2865%	0.2246%
PHASE III	236	51	25 Aynsley Court	B	1983	N/A	N/A	0.2858%	0.2166%	0.1600%
PHASE III	237	51	27 Aynsley Court	C-1	2316	N/A	N/A	0.3338%	0.2530%	0.1084%
PHASE III	238	51	29 Aynsley Court	D	2622	N/A	N/A	0.3779%	0.2865%	0.2246%
PHASE III	239	52	11 Aynsley Court	D	2622	N/A	N/A	0.3779%	0.2865%	0.2246%
PHASE III	240	52	15 Aynsley Court	C-2	2478	N/A	N/A	0.3571%	0.2707%	0.2123%
PHASE III	241	52	17 Aynsley Court	B	1983	N/A	N/A	0.2858%	0.2166%	0.1600%
PHASE III	242	52	19 Aynsley Court	C-1	2316	N/A	N/A	0.3338%	0.2530%	0.1984%
PHASE III	243	52	21 Aynsley Court	E	2602	N/A	N/A	0.3750%	0.2843%	0.2220%
PHASE III	244	53	1 Aynsley Court	D	2622	N/A	N/A	0.3779%	0.2865%	0.2246%
PHASE III	245	53	3 Aynsley Court	C-2	2478	N/A	N/A	0.3571%	0.2707%	0.2123%
PHASE III	246	53	5 Aynsley Court	B	1983	N/A	N/A	0.2858%	0.2166%	0.1600%
PHASE III	247	53	7 Aynsley Court	C-1	2316	N/A	N/A	0.3338%	0.2530%	0.1084%
PHASE III	248	53	9 Aynsley Court	E	2602	N/A	N/A	0.3750%	0.2843%	0.2229%
PHASE III	542	C108	66 REVERE COURT	D	818	N/A	N/A	0.1179%	0.0894%	0.0701%
PHASE III	543	C108	67 REVERE COURT	B	537	N/A	N/A	0.0774%	0.0587%	0.0460%
PHASE III	544	C108	68 REVERE COURT	C	668	N/A	N/A	0.0963%	0.0730%	0.0572%
PHASE III	545	C108	69 REVERE COURT	C	668	N/A	N/A	0.0963%	0.0730%	0.0572%
PHASE III	546	C108	70 REVERE COURT	B	537	N/A	N/A	0.0774%	0.0587%	0.0460%
PHASE III	547	C108	71 REVERE COURT	B	537	N/A	N/A	0.0774%	0.0587%	0.0460%
PHASE III	548	C108	72 REVERE COURT	A	414	N/A	N/A	0.0597%	0.0452%	0.0355%
PHASE III	549	C108	73 REVERE COURT	D	818	N/A	N/A	0.1179%	0.0894%	0.0701%
PHASE III	550	C108	74 REVERE COURT	B	537	N/A	N/A	0.0774%	0.0587%	0.0460%
PHASE III	551	C108	75 REVERE COURT	C	668	N/A	N/A	0.0963%	0.0730%	0.0572%
PHASE III	552	C108	76 REVERE COURT	C	668	N/A	N/A	0.0963%	0.0730%	0.0572%
PHASE III	553	C108	77 REVERE COURT	B	537	N/A	N/A	0.0774%	0.0587%	0.0460%
PHASE III	554	C108	78 REVERE COURT	D	818	N/A	N/A	0.1179%	0.0894%	0.0701%

PHASE III	555	C109	82 REVERE COURT	B	537	N/A	N/A	0.0774%	0.0587%	0.0460%
PHASE III	556	C109	83 REVERE COURT	B	537	N/A	N/A	0.0774%	0.0587%	0.0460%
PHASE III	557	C109	84 REVERE COURT	C	668	N/A	N/A	0.0963%	0.0730%	0.0572%
PHASE III	558	C109	85 REVERE COURT	C	668	N/A	N/A	0.0963%	0.0730%	0.0572%
PHASE III	559	C109	86 REVERE COURT	B	537	N/A	N/A	0.0774%	0.0587%	0.0460%
PHASE III	560	C109	87 REVERE COURT	B	537	N/A	N/A	0.0774%	0.0587%	0.0460%
PHASE III	561	C109	88 REVERE COURT	A	414	N/A	N/A	0.0597%	0.0452%	0.0355%
PHASE III	562	C109	89 REVERE COURT	C	668	N/A	N/A	0.0963%	0.0730%	0.0572%
PHASE III	563	C109	90 REVERE COURT	B	537	N/A	N/A	0.0774%	0.0587%	0.0460%
PHASE III	564	C109	91 REVERE COURT	C	668	N/A	N/A	0.0963%	0.0730%	0.0572%
PHASE III	565	C109	92 REVERE COURT	C	668	N/A	N/A	0.0963%	0.0730%	0.0572%
PHASE III	566	C109	93 REVERE COURT	B	537	N/A	N/A	0.0774%	0.0587%	0.0460%
PHASE III	567	C109	94 REVERE COURT	C	668	N/A	N/A	0.0963%	0.0730%	0.0572%
					150757	N/A	N/A	100.0000%	75.8104%	59.4542%

PHASE IV

PHASE	NEW UNIT #	BLDG #	ADDRESS	UNIT TYPE	SQUARE FEET	PHASE ONE %	PHASE TWO %	PHASE THREE %	PHASE FOUR %	PHASE FIVE %
PHASE IV	104	6	8 Wedgewood Dr.	E	2602	N/A	N/A	N/A	0.2843%	0.2229%
PHASE IV	105	6	6 Wedgewood Dr.	A	1835	N/A	N/A	N/A	0.2005%	0.1572%
PHASE IV	106	6	4 Wedgewood Dr.	C	2223	N/A	N/A	N/A	0.2429%	0.1905%
PHASE IV	107	6	2 Wedgewood Dr.	D	2622	N/A	N/A	N/A	0.2865%	0.2246%
PHASE IV	108	7	18 Wedgewood Dr.	E	2602	N/A	N/A	N/A	0.2843%	0.2229%
PHASE IV	109	7	16 Wedgewood Dr.	A	1835	N/A	N/A	N/A	0.2005%	0.1572%
PHASE IV	110	7	14 Wedgewood Dr.	C	2223	N/A	N/A	N/A	0.2429%	0.1905%
PHASE IV	111	7	12 Wedgewood Dr.	B	1983	N/A	N/A	N/A	0.2166%	0.1699%
PHASE IV	112	7	10 Wedgewood Dr.	D	2622	N/A	N/A	N/A	0.2865%	0.2246%
PHASE IV	113	8	28 Wedgewood Dr.	D	2622	N/A	N/A	N/A	0.2865%	0.2246%
PHASE IV	114	8	26 Wedgewood Dr.	B	1983	N/A	N/A	N/A	0.2166%	0.1699%
PHASE IV	115	8	24 Wedgewood Dr.	C	2223	N/A	N/A	N/A	0.2429%	0.1905%
PHASE IV	116	8	22 Wedgewood Dr.	A	1835	N/A	N/A	N/A	0.2005%	0.1572%
PHASE IV	117	8	20 Wedgewood Dr.	E	2602	N/A	N/A	N/A	0.2843%	0.2229%
PHASE IV	118	9	38 Wedgewood Dr	D	2622	N/A	N/A	N/A	0.2865%	0.2246%
PHASE IV	119	9	36 Wedgewood Dr	B	1983	N/A	N/A	N/A	0.2166%	0.1699%
PHASE IV	120	9	34 Wedgewood Dr.	C	2223	N/A	N/A	N/A	0.2429%	0.1905%
PHASE IV	121	9	32 Wedgewood Dr	A	1835	N/A	N/A	N/A	0.2005%	0.1572%
PHASE IV	122	9	30 Wedgewood Dr.	E	2602	N/A	N/A	N/A	0.2843%	0.2229%
PHASE IV	123	10	48 Wedgewood Dr.	D	2622	N/A	N/A	N/A	0.2865%	0.2246%
PHASE IV	124	10	46 Wedgewood Dr.	B	1983	N/A	N/A	N/A	0.2166%	0.1699%
PHASE IV	125	10	44 Wedgewood Dr.	C	2223	N/A	N/A	N/A	0.2429%	0.1905%
PHASE IV	126	10	42 Wedgewood Dr.	A	1835	N/A	N/A	N/A	0.2005%	0.1572%
PHASE IV	127	10	40 Wedgewood Dr.	E	2602	N/A	N/A	N/A	0.2843%	0.2229%

PHASE IV	128	11	14 Baccarat Court	D	2622	N/A	N/A	N/A	0.2865%	0.2246%
PHASE IV	129	11	12 Baccarat Court	B	1983	N/A	N/A	N/A	0.2166%	0.1600%
PHASE IV	130	11	10 Baccarat Court	C	2223	N/A	N/A	N/A	0.2420%	0.1005%
PHASE IV	131	11	8 Baccarat Court	A	1835	N/A	N/A	N/A	0.2005%	0.1572%
PHASE IV	132	11	6 Baccarat Court	E	2602	N/A	N/A	N/A	0.2843%	0.2220%
PHASE IV	133	12	9 Baccarat Court	E	2602	N/A	N/A	N/A	0.2843%	0.2220%
PHASE IV	134	12	11 Baccarat Court	A	1835	N/A	N/A	N/A	0.2005%	0.1572%
PHASE IV	135	12	15 Baccarat Court	C	2223	N/A	N/A	N/A	0.2420%	0.1005%
PHASE IV	136	12	17 Baccarat Court	D	2622	N/A	N/A	N/A	0.2865%	0.2246%
PHASE IV	137	13	1 Baccarat Court	E	2602	N/A	N/A	N/A	0.2843%	0.2220%
PHASE IV	138	13	3 Baccarat Court	A	1835	N/A	N/A	N/A	0.2005%	0.1572%
PHASE IV	139	13	5 Baccarat Court	C	2223	N/A	N/A	N/A	0.2420%	0.1005%
PHASE IV	140	13	7 Baccarat Court	D	2622	N/A	N/A	N/A	0.2885%	0.2246%
PHASE IV	141	14	68 Wedgewood Drive	D	2622	N/A	N/A	N/A	0.2865%	0.2246%
PHASE IV	142	14	66 Wedgewood Drive	B	1983	N/A	N/A	N/A	0.2166%	0.1600%
PHASE IV	143	14	64 Wedgewood Drive	C	2223	N/A	N/A	N/A	0.2420%	0.1005%
PHASE IV	144	14	62 Wedgewood Drive	A	1835	N/A	N/A	N/A	0.2005%	0.1572%
PHASE IV	145	14	60 Wedgewood Drive	E	2602	N/A	N/A	N/A	0.2843%	0.2229%
PHASE IV	146	15	10 Steuben Court	E	2602	N/A	N/A	N/A	0.2843%	0.2220%
PHASE IV	147	15	6 Steuben Court	A	1835	N/A	N/A	N/A	0.2005%	0.1572%
PHASE IV	146	15	6 Steuben Court	C	2223	N/A	N/A	N/A	0.2420%	0.1005%
PHASE IV	149	15	4 Steuben Court	B	1983	N/A	N/A	N/A	0.2166%	0.1600%
PHASE IV	150	15	2 Steuben Court	D	2622	N/A	N/A	N/A	0.2885%	0.2246%
PHASE IV	151	16	18 Steuben Court	D	2622	N/A	N/A	N/A	0.2865%	0.2246%
PHASE IV	152	16	16 Steuben Court	C	2223	N/A	N/A	N/A	0.2420%	0.1005%
PHASE IV	153	16	14 Steuben Court	A	1835	N/A	N/A	N/A	0.2005%	0.1572%
PHASE IV	154	16	12 Steuben Court	E	2602	N/A	N/A	N/A	0.2843%	0.2220%
PHASE IV	155	17	28 Steuben Court	E	2602	N/A	N/A	N/A	0.2843%	0.2220%
PHASE IV	156	17	26 Steuben Court	A	1835	N/A	N/A	N/A	0.2005%	0.1572%
PHASE IV	157	17	24 Steuben Court	C	2223	N/A	N/A	N/A	0.2420%	0.1005%
PHASE IV	158	17	22 Steuben Court	B	1983	N/A	N/A	N/A	0.2166%	0.1800%
PHASE IV	159	17	20 Steuben Court	D	2622	N/A	N/A	N/A	0.2865%	0.2246%
PHASE IV	160	18	84 Wedgewood Drive	D	2622	N/A	N/A	N/A	0.2865%	0.2246%
PHASE IV	161	18	82 Wedgewood Drive	C	2223	N/A	N/A	N/A	0.2420%	0.1005%
PHASE IV	162	18	80 Wedgewood Drive	A	1835	N/A	N/A	N/A	0.2005%	0.1572%
PHASE IV	163	18	78 Wedgewood Drive	E	2602	N/A	N/A	N/A	0.2843%	0.2220%
PHASE IV	164	19	81 Wedgewood Drive	D	2622	N/A	N/A	N/A	0.2865%	0.2246%
PHASE IV	165	19	83 Wedgewood Drive	B	1983	N/A	N/A	N/A	0.2166%	0.1600%
PHASE IV	166	19	85 Wedgewood Drive	C	2223	N/A	N/A	N/A	0.2420%	0.1005%
PHASE IV	167	19	87 Wedgewood Drive	A	1835	N/A	N/A	N/A	0.2005%	0.1572%
PHASE IV	168	19	89 Wedgewood Drive	E	2602	N/A	N/A	N/A	0.2843%	0.2220%
PHASE IV	169	20	69 Wedgewood Drive	E	2602	N/A	N/A	N/A	0.2843%	0.2220%
PHASE IV	170	20	71 Wedgewood Drive	A	1835	N/A	N/A	N/A	0.2005%	0.1572%
PHASE IV	171	20	73 Wedgewood Drive	C	2223	N/A	N/A	N/A	0.2420%	0.1005%
PHASE IV	172	20	75 Wedgewood Drive	B	1983	N/A	N/A	N/A	0.2166%	0.1800%
PHASE IV	173	20	77 Wedgewood Drive	D	2622	N/A	N/A	N/A	0.2865%	0.2246%
PHASE IV	174	21	49 Wedgewood Drive	E	2602	N/A	N/A	N/A	0.2843%	0.2220%

PHASE IV	175	21	51 Wedgewood Drive	A	1835	N/A	N/A	N/A	0.2005%	0.1572%
PHASE IV	176	21	53 Wedgewood Drive	C	2223	N/A	N/A	N/A	0.2429%	0.1905%
PHASE IV	177	21	55 Wedgewood Drive	B	1983	N/A	N/A	N/A	0.2166%	0.1699%
PHASE IV	178	21	57 Wedgewood Drive	D	2622	N/A	N/A	N/A	0.2865%	0.2246%
PHASE IV	179	22	29 Wedgewood Drive	D	2622	N/A	N/A	N/A	0.2865%	0.2246%
PHASE IV	180	22	31 Wedgewood Drive	C	2223	N/A	N/A	N/A	0.2429%	0.1905%
PHASE IV	181	22	33 Wedgewood Drive	A	1835	N/A	N/A	N/A	0.2005%	0.1572%
PHASE IV	182	22	35 Wedgewood Drive	E	2602	N/A	N/A	N/A	0.2843%	0.2229%
PHASE IV	183	23	11 Wedgewood Drive	D	2622	N/A	N/A	N/A	0.2865%	0.2246%
PHASE IV	184	23	15 Wedgewood Drive	B	1983	N/A	N/A	N/A	0.2166%	0.1699%
PHASE IV	185	23	17 Wedgewood Drive	C	2223	N/A	N/A	N/A	0.2429%	0.1905%
PHASE IV	186	23	19 Wedgewood Drive	A	1835	N/A	N/A	N/A	0.2005%	0.1572%
PHASE IV	187	23	21 Wedgewood Drive	E	2602	N/A	N/A	N/A	0.2843%	0.2220%
PHASE IV	188	24	1 Wedgewood Drive	E	2602	N/A	N/A	N/A	0.2843%	0.2229%
PHASE IV	189	24	3 Wedgewood Drive	A	1835	N/A	N/A	N/A	0.2005%	0.1572%
PHASE IV	190	24	5 Wedgewood Drive	C	2223	N/A	N/A	N/A	0.2429%	0.1905%
PHASE IV	191	24	7 Wedgewood Drive	B	1983	N/A	N/A	N/A	0.2166%	0.1699%
PHASE IV	192	24	9 Wedgewood Drive	D	2622	N/A	N/A	N/A	0.2865%	0.2246%
PHASE IV	478	C104	1 Revere Court	C	668	N/A	N/A	N/A	0.0730%	0.0572%
PHASE IV	479	C104	2 Revere Court	B	537	N/A	N/A	N/A	0.0587%	0.0460%
PHASE IV	480	C104	3 Revere Court	B	537	N/A	N/A	N/A	0.0587%	0.0460%
PHASE IV	481	C104	4 Revere Court	C	668	N/A	N/A	N/A	0.0730%	0.0572%
PHASE IV	482	C104	5 Revere Court	C	668	N/A	N/A	N/A	0.0730%	0.0572%
PHASE IV	483	C104	6 Revere Court	B	537	N/A	N/A	N/A	0.0587%	0.0460%
PHASE IV	484	C104	7 Revere Court	B	537	N/A	N/A	N/A	0.0587%	0.0460%
PHASE IV	485	C104	8 Revere Court	C	668	N/A	N/A	N/A	0.0730%	0.0572%
PHASE IV	486	C104	9 Revere Court	C	668	N/A	N/A	N/A	0.0730%	0.0572%
PHASE IV	487	C104	10 Revere Court	B	537	N/A	N/A	N/A	0.0587%	0.0460%
PHASE IV	488	C104	11 Revere Court	B	537	N/A	N/A	N/A	0.0587%	0.0460%
PHASE IV	489	C104	12 Revere Court	C	668	N/A	N/A	N/A	0.0730%	0.0572%
PHASE IV	490	C104	14 Revere Court	C	668	N/A	N/A	N/A	0.0730%	0.0572%
PHASE IV	491	C104	15 Revere Court	B	537	N/A	N/A	N/A	0.0587%	0.0460%
PHASE IV	492	C104	16 Revere Court	B	537	N/A	N/A	N/A	0.0587%	0.0460%
PHASE IV	493	C104	17 Revere Court	C	668	N/A	N/A	N/A	0.0730%	0.0572%
PHASE IV	494	C105	18 Revere Court	C	668	N/A	N/A	N/A	0.0730%	0.0572%
PHASE IV	495	C105	19 Revere Court	B	537	N/A	N/A	N/A	0.0587%	0.0460%
PHASE IV	496	C105	20 Revere Court	B	537	N/A	N/A	N/A	0.0587%	0.0460%
PHASE IV	497	C105	21 Revere Court	C	668	N/A	N/A	N/A	0.0730%	0.0572%
PHASE IV	498	C105	22 Revere Court	C	668	N/A	N/A	N/A	0.0730%	0.0572%
PHASE IV	499	C105	23 Revere Court	B	537	N/A	N/A	N/A	0.0587%	0.0460%
PHASE IV	500	C105	24 Revere Court	B	537	N/A	N/A	N/A	0.0587%	0.0460%
PHASE IV	501	C105	25 Revere Court	C	668	N/A	N/A	N/A	0.0730%	0.0572%
PHASE IV	502	C105	26 Revere Court	C	668	N/A	N/A	N/A	0.0730%	0.0572%
PHASE IV	503	C105	27 Revere Court	B	537	N/A	N/A	N/A	0.0587%	0.0460%
PHASE IV	504	C105	28 Revere Court	B	537	N/A	N/A	N/A	0.0587%	0.0460%
PHASE IV	505	C105	29 Revere Court	C	668	N/A	N/A	N/A	0.0730%	0.0572%
PHASE IV	506	C105	30 Revere Court	C	668	N/A	N/A	N/A	0.0730%	0.0572%

PHASE IV	507	C105	31 Revere Court	B	537	N/A	N/A	N/A	0.0587%	0.0460%
PHASE IV	508	C105	32 Revere Court	B	537	N/A	N/A	N/A	0.0587%	0.0460%
PHASE IV	509	C105	33 Revere Court	C	666	N/A	N/A	N/A	0.0730%	0.0572%
					221417	N/A	N/A	N/A	100.0000%	78.4240%

PHASE V

<u>PHASE</u>	<u>NEW UNIT #</u>	<u>BLDG #</u>	<u>ADDRESS</u>	<u>UNIT TYPE</u>	<u>SQUARE FEET</u>	<u>PHASE ONE %</u>	<u>PHASE TWO %</u>	<u>PHASE THREE %</u>	<u>PHASE FOUR %</u>	<u>PHASE FIVE %</u>
PHASE V	1	1	1 Haviland Court	E	2602	N/A	N/A	N/A	N/A	0.2229%
PHASE V	2	1	3 Haviland Court	A	1835	N/A	N/A	N/A	N/A	0.1572%
PHASE V	3	1	5 Haviland Court	C	2223	N/A	N/A	N/A	N/A	0.1905%
PHASE V	4	1	7 Haviland Court	B	1983	N/A	N/A	N/A	N/A	0.1699%
PHASE V	5	1	9 Haviland Court	D	2622	N/A	N/A	N/A	N/A	0.2246%
PHASE V	6	2	11 Haviland Court	D	2622	N/A	N/A	N/A	N/A	0.2246%
PHASE V	7	2	15 Haviland Court	B	1983	N/A	N/A	N/A	N/A	0.1699%
PHASE V	8	2	17 Haviland Court	C	2223	N/A	N/A	N/A	N/A	0.1905%
PHASE V	9	2	19 Haviland Court	A	1835	N/A	N/A	N/A	N/A	0.1572%
PHASE V	10	2	21 Haviland Court	E	2602	N/A	N/A	N/A	N/A	0.2229%
PHASE V	11	3	23 Haviland Court	E	2602	N/A	N/A	N/A	N/A	0.2229%
PHASE V	12	3	25 Haviland Court	A	1835	N/A	N/A	N/A	N/A	0.1572%
PHASE V	13	3	27 Haviland Court	C	2223	N/A	N/A	N/A	N/A	0.1905%
PHASE V	14	3	29 Haviland Court	D	2622	N/A	N/A	N/A	N/A	0.2246%
PHASE V	15	4	20 Haviland Court	D	2622	N/A	N/A	N/A	N/A	0.2246%
PHASE V	16	4	18 Haviland Court	C	2223	N/A	N/A	N/A	N/A	0.1905%
PHASE V	17	4	16 Haviland Court	A	1835	N/A	N/A	N/A	N/A	0.1572%
PHASE V	18	4	14 Haviland Court	E	2602	N/A	N/A	N/A	N/A	0.2229%
PHASE V	19	5	8 Haviland Court	D	2622	N/A	N/A	N/A	N/A	0.2246%
PHASE V	20	5	6 Haviland Court	C	2223	N/A	N/A	N/A	N/A	0.1905%
PHASE V	21	5	4 Haviland Court	A	1835	N/A	N/A	N/A	N/A	0.1572%
PHASE V	22	5	2 Haviland Court	E	2602	N/A	N/A	N/A	N/A	0.2229%
PHASE V	23	25	8 Louis Drive	D	2622	N/A	N/A	N/A	N/A	0.2246%
PHASE V	24	25	6 Louis Drive	C	2223	N/A	N/A	N/A	N/A	0.1005%
PHASE V	25	25	4 Louis Drive	A	1835	N/A	N/A	N/A	N/A	0.1572%
PHASE V	26	25	2 Louis Drive	E	2602	N/A	N/A	N/A	N/A	0.2229%
PHASE V	27	26	18 Louis Drive	E	2602	N/A	N/A	N/A	N/A	0.2229%
PHASE V	28	26	16 Louis Drive	A	1835	N/A	N/A	N/A	N/A	0.1572%
PHASE V	29	26	14 Louis Drive	C	2223	N/A	N/A	N/A	N/A	0.1905%
PHASE V	30	26	12 Louis Drive	B	1983	N/A	N/A	N/A	N/A	0.1699%
PHASE V	31	26	10 Louis Drive	D	2622	N/A	N/A	N/A	N/A	0.2246%
PHASE V	32	27	1 Nippon Court	E	2602	N/A	N/A	N/A	N/A	0.2229%
PHASE V	33	27	3 Nippon Court	A	1835	N/A	N/A	N/A	N/A	0.1572%
PHASE V	34	27	5 Nippon Court	C	2223	N/A	N/A	N/A	N/A	0.1905%
PHASE V	35	27	7 Nippon Court	D	2622	N/A	N/A	N/A	N/A	0.2246%

PHASE V	36	28	1 Louis Drive	E	2602	N/A	N/A	N/A	N/A	0.2220%
PHASE V	37	28	3 Louis Drive	A	1835	N/A	N/A	N/A	N/A	0.1572%
PHASE V	38	28	5 Louis Drive	C	2223	N/A	N/A	N/A	N/A	0.1905%
PHASE V	39	28	7 Louis Drive	B	1983	N/A	N/A	N/A	N/A	0.1690%
PHASE V	40	28	9 Louis Drive	D	2622	N/A	N/A	N/A	N/A	0.2246%
PHASE V	41	29	11 Louis Drive	D	2622	N/A	N/A	N/A	N/A	0.2246%
PHASE V	42	29	15 Louis Drive	B	1983	N/A	N/A	N/A	N/A	0.1699%
PHASE V	43	29	17 Louis Drive	C	2223	N/A	N/A	N/A	N/A	0.1905%
PHASE V	44	29	19 Louis Drive	A	1835	N/A	N/A	N/A	N/A	0.1572%
PHASE V	45	29	21 Louis Drive	E	2602	N/A	N/A	N/A	N/A	0.2229%
PHASE V	46	30	41 Louis Drive	D	2622	N/A	N/A	N/A	N/A	0.2246%
PHASE V	47	30	43 Louis Drive	B	1983	N/A	N/A	N/A	N/A	0.1699%
PHASE V	48	30	45 Louis Drive	C	2223	N/A	N/A	N/A	N/A	0.1905%
PHASE V	49	30	47 Louis Drive	A	1835	N/A	N/A	N/A	N/A	0.1572%
PHASE V	50	30	49 Louis Drive	E	2602	N/A	N/A	N/A	N/A	0.2229%
PHASE V	51	31	51 Louis Drive	E	2602	N/A	N/A	N/A	N/A	0.2229%
PHASE V	52	31	53 Louis Drive	A	1835	N/A	N/A	N/A	N/A	0.1572%
PHASE V	53	31	55 Louis Drive	C	2223	N/A	N/A	N/A	N/A	0.1905%
PHASE V	54	31	57 Louis Drive	B	1983	N/A	N/A	N/A	N/A	0.1699%
PHASE V	55	31	59 Louis Drive	D	2622	N/A	N/A	N/A	N/A	0.2246%
PHASE V	56	32	61 Louis Drive	E	2602	N/A	N/A	N/A	N/A	0.2229%
PHASE V	57	32	63 Louis Drive	A	1835	N/A	N/A	N/A	N/A	0.1572%
PHASE V	58	32	65 Louis Drive	C	2223	N/A	N/A	N/A	N/A	0.1905%
PHASE V	59	32	67 Louis Drive	B	1983	N/A	N/A	N/A	N/A	0.1699%
PHASE V	60	32	69 Louis Drive	D	2622	N/A	N/A	N/A	N/A	0.2246%
PHASE V	61	33	71 Louis Drive	E	2602	N/A	N/A	N/A	N/A	0.2229%
PHASE V	62	33	73 Louis Drive	A	1835	N/A	N/A	N/A	N/A	0.1572%
PHASE V	63	33	75 Louis Drive	C	2223	N/A	N/A	N/A	N/A	0.1905%
PHASE V	64	33	77 Louis Drive	B	1983	N/A	N/A	N/A	N/A	0.1699%
PHASE V	65	33	79 Louis Drive	D	2622	N/A	N/A	N/A	N/A	0.2246%
PHASE V	66	34	68 Louis Drive	D	2622	N/A	N/A	N/A	N/A	0.2246%
PHASE V	67	34	66 Louis Drive	B	1983	N/A	N/A	N/A	N/A	0.1699%
PHASE V	68	34	64 Louis Drive	C	2223	N/A	N/A	N/A	N/A	0.1905%
PHASE V	69	34	62 Louis Drive	A	1835	N/A	N/A	N/A	N/A	0.1572%
PHASE V	70	34	60 Louis Drive	E	2602	N/A	N/A	N/A	N/A	0.2229%
PHASE V	71	35	52 Louis Drive	D	2622	N/A	N/A	N/A	N/A	0.2246%
PHASE V	72	35	50 Louis Drive	B	1983	N/A	N/A	N/A	N/A	0.1699%
PHASE V	73	35	48 Louis Drive	C	2223	N/A	N/A	N/A	N/A	0.1905%
PHASE V	74	35	46 Louis Drive	A	1835	N/A	N/A	N/A	N/A	0.1572%
PHASE V	75	35	44 Louis Drive	E	2602	N/A	N/A	N/A	N/A	0.2229%
PHASE V	76	36	81 Louis Drive	D	2622	N/A	N/A	N/A	N/A	0.2246%
PHASE V	77	36	83 Louis Drive	B	1983	N/A	N/A	N/A	N/A	0.1699%
PHASE V	78	36	85 Louis Drive	C	2223	N/A	N/A	N/A	N/A	0.1905%
PHASE V	79	36	87 Louis Drive	A	1835	N/A	N/A	N/A	N/A	0.1572%
PHASE V	80	36	89 Louis Drive	E	2602	N/A	N/A	N/A	N/A	0.2229%
PHASE V	81	37	91 Louis Drive	E	2602	N/A	N/A	N/A	N/A	0.2229%
PHASE V	82	37	93 Louis Drive	A	1835	N/A	N/A	N/A	N/A	0.1572%

PHASE V	83	37	95 Louis Drive	C	2223	N/A	N/A	N/A	N/A	0.1905%
PHASE V	84	37	97 Louis Drive	B	1983	N/A	N/A	N/A	N/A	0.1609%
PHASE V	85	37	99 Louis Drive	D	2622	N/A	N/A	N/A	N/A	0.2246%
PHASE V	86	38	101 Louis Drive	E	2602	N/A	N/A	N/A	N/A	0.2220%
PHASE V	87	38	103 Louis Drive	A	1835	N/A	N/A	N/A	N/A	0.1572%
PHASE V	88	38	105 Louis Drive	C	2223	N/A	N/A	N/A	N/A	0.1005%
PHASE V	89	38	107 Louis Drive	D	2622	N/A	N/A	N/A	N/A	0.2246%
PHASE V	00	39	109 Louis Drive	D	2622	N/A	N/A	N/A	N/A	0.2246%
PHASE V	91	39	111 Louis Drive	B	1983	N/A	N/A	N/A	N/A	0.1600%
PHASE V	92	39	115 Louis Drive	C	2223	N/A	N/A	N/A	N/A	0.1005%
PHASE V	93	39	117 Louis Drive	A	1835	N/A	N/A	N/A	N/A	0.1572%
PHASE V	94	39	119 Louis Drive	E	2602	N/A	N/A	N/A	N/A	0.2220%
PHASE V	95	40	40 Louis Drive	E	2602	N/A	N/A	N/A	N/A	0.2220%
PHASE V	96	40	38 Louis Drive	A	1835	N/A	N/A	N/A	N/A	0.1572%
PHASE V	97	40	36 Louis Drive	C	2223	N/A	N/A	N/A	N/A	0.1005%
PHASE V	98	40	34 Louis Drive	D	2622	N/A	N/A	N/A	N/A	0.2246%
PHASE V	99	41	32 Louis Drive	D	2622	N/A	N/A	N/A	N/A	0.2246%
PHASE V	100	41	30 Louis Drive	B	1983	N/A	N/A	N/A	N/A	0.1600%
PHASE V	101	41	28 Louis Drive	C	2223	N/A	N/A	N/A	N/A	0.1005%
PHASE V	102	41	26 Louis Drive	A	1835	N/A	N/A	N/A	N/A	0.1572%
PHASE V	103	41	24 Louis Drive	E	2602	N/A	N/A	N/A	N/A	0.2220%
PHASE V	584	C102	108 REVERE COURT	D	818	N/A	N/A	N/A	N/A	0.0701%
PHASE V	585	C102	109 REVERE COURT	B	537	N/A	N/A	N/A	N/A	0.0460%
PHASE V	586	C102	110 REVERE COURT	C	668	N/A	N/A	N/A	N/A	0.0572%
PHASE V	587	C102	111 REVERE COURT	C	668	N/A	N/A	N/A	N/A	0.0572%
PHASE V	588	C102	112 REVERE COURT	B	537	N/A	N/A	N/A	N/A	0.0460%
PHASE V	589	C102	113 REVERE COURT	B	537	N/A	N/A	N/A	N/A	0.0460%
PHASE V	590	C102	114 REVERE COURT	A	414	N/A	N/A	N/A	N/A	0.0355%
PHASE V	591	C102	115 REVERE COURT	D	818	N/A	N/A	N/A	N/A	0.0701%
PHASE V	592	C102	116 REVERE COURT	B	537	N/A	N/A	N/A	N/A	0.0460%
PHASE V	593	C102	117 REVERE COURT	C	668	N/A	N/A	N/A	N/A	0.0572%
PHASE V	594	C102	118 REVERE COURT	C	668	N/A	N/A	N/A	N/A	0.0572%
PHASE V	595	C102	119 REVERE COURT	B	537	N/A	N/A	N/A	N/A	0.0460%
PHASE V	596	C102	120 REVERE COURT	D	818	N/A	N/A	N/A	N/A	0.0701%
PHASE V	597	C103	121 REVERE COURT	C	668	N/A	N/A	N/A	N/A	0.0572%
PHASE V	598	C103	122 REVERE COURT	B	537	N/A	N/A	N/A	N/A	0.0460%
PHASE V	599	C103	123 REVERE COURT	B	537	N/A	N/A	N/A	N/A	0.0460%
PHASE V	600	C103	124 REVERE COURT	C	668	N/A	N/A	N/A	N/A	0.0572%
PHASE V	601	C103	125 REVERE COURT	C	668	N/A	N/A	N/A	N/A	0.0572%
PHASE V	602	C103	126 REVERE COURT	B	537	N/A	N/A	N/A	N/A	0.0460%
PHASE V	603	C103	127 REVERE COURT	B	537	N/A	N/A	N/A	N/A	0.0460%
PHASE V	604	C103	128 REVERE COURT	C	666	N/A	N/A	N/A	N/A	0.0572%
PHASE V	605	C103	129 REVERE COURT	C	668	N/A	N/A	N/A	N/A	0.0572%
PHASE V	606	C103	130 REVERE COURT	B	537	N/A	N/A	N/A	N/A	0.0460%
PHASE V	607	C103	131 REVERE COURT	B	537	N/A	N/A	N/A	N/A	0.0460%
PHASE V	608	C103	132 REVERE COURT	C	668	N/A	N/A	N/A	N/A	0.0572%
PHASE V	609	C103	133 REVERE COURT	C	668	N/A	N/A	N/A	N/A	0.0572%

PHASE V	610	C103	134 REVERE COURT	B	537	N/A	N/A	N/A	N/A	0.0460%
PHASE V	611	C103	135 REVERE COURT	B	537	N/A	N/A	N/A	N/A	0.0460%
PHASE V	612	C103	136 REVERE COURT	C	668	N/A	N/A	N/A	N/A	0.0572%
					251814	N/A	N/A	N/A	N/A	100.0000%

SUMMARY

<i>PHASE I</i>	303880
<i>PHASE II</i>	239284
Cumul. total	543164
<i>PHASE III</i>	150757
Cumul. total	693921
<i>PHASE IV</i>	221417
Cumul. total	915338
<i>PHASE V</i>	251814
Grand Total	1167152

DB4189 P283

DB4223 P204

PHASE II	312	66	27 Waterford Drive	D	2622	N/A	0.4827%	0.3779%	0.2865%	0.2246%
PHASE II	313	67	29 Waterford Drive	D	2622	N/A	0.4827%	0.3779%	0.2865%	0.2246%
PHASE II	314	67	31 Waterford Drive	B	1983	N/A	0.3651%	0.2858%	0.2166%	0.1699%
PHASE II	315	67	33 Waterford Drive	C-1	2316	N/A	0.4264%	0.3338%	0.2530%	0.1984%
PHASE II	316	67	35 Waterford Drive	B	1983	N/A	0.3651%	0.2858%	0.2166%	0.1699%
PHASE II	317	67	37 Waterford Drive	E	2602	N/A	0.4790%	0.3750%	0.2843%	0.2229%
PHASE II	318	68	39 Waterford Drive	D	2622	N/A	0.4827%	0.3779%	0.2865%	0.2246%
PHASE II	319	68	41 Waterford Drive	B	1983	N/A	0.3651%	0.2858%	0.2166%	0.1699%
PHASE II	320	68	43 Waterford Drive	C-2	2478	N/A	0.4562%	0.3571%	0.2707%	0.2123%
PHASE II	321	68	45 Waterford Drive	B	1983	N/A	0.3651%	0.2858%	0.2166%	0.1699%
PHASE II	322	68	47 Waterford Drive	E	2602	N/A	0.4790%	0.3750%	0.2843%	0.2229%
PHASE II	323	69	49 Waterford Drive	E	2602	N/A	0.4790%	0.3750%	0.2843%	0.2229%
PHASE II	324	69	51 Waterford Drive	B	1983	N/A	0.3651%	0.2858%	0.2166%	0.1699%
PHASE II	325	69	53 Waterford Drive	C-1	2316	N/A	0.4264%	0.3338%	0.2530%	0.1984%
PHASE II	326	69	55 Waterford Drive	D	2622	N/A	0.4827%	0.3779%	0.2865%	0.2246%
PHASE II	342	71	62 Waterford Drive	E	2602	N/A	0.4790%	0.3750%	0.2843%	0.2229%
PHASE II	341	71	60 Waterford Drive	B	1983	N/A	0.3651%	0.2858%	0.2166%	0.1699%
PHASE II	340	71	58 Waterford Drive	C-1	2316	N/A	0.4264%	0.3338%	0.2530%	0.1984%
PHASE II	339	71	56 Waterford Drive	D	2622	N/A	0.4827%	0.3779%	0.2865%	0.2246%
PHASE II	338	72	46 Waterford Drive	E	2602	N/A	0.4790%	0.3750%	0.2843%	0.2229%
PHASE II	337	72	44 Waterford Drive	B	1983	N/A	0.3651%	0.2858%	0.2166%	0.1699%
PHASE II	336	72	42 Waterford Drive	C-1	2316	N/A	0.4264%	0.3338%	0.2530%	0.1984%
PHASE II	335	72	40 Waterford Drive	D	2622	N/A	0.4827%	0.3779%	0.2865%	0.2246%
PHASE II	334	73	16 Waterford Drive	D	2622	N/A	0.4827%	0.3779%	0.2865%	0.2246%
PHASE II	333	73	14 Waterford Drive	C-1	2316	N/A	0.4264%	0.3338%	0.2530%	0.1984%
PHASE II	332	73	12 Waterford Drive	B	1983	N/A	0.3651%	0.2858%	0.2166%	0.1699%
PHASE II	331	73	10 Waterford Drive	E	2602	N/A	0.4790%	0.3750%	0.2843%	0.2229%
PHASE II	330	74	8 Waterford Drive	E	2602	N/A	0.4790%	0.3750%	0.2843%	0.2229%
PHASE II	329	74	6 Waterford Drive	B	1983	N/A	0.4264%	0.3338%	0.2530%	0.1984%
PHASE II	328	74	4 Waterford Drive	C-1	2316	N/A	0.3651%	0.2858%	0.2166%	0.1699%
PHASE II	327	74	2 Waterford Drive	D	2622	N/A	0.4827%	0.3779%	0.2865%	0.2246%
PHASE II	510	C106	34 Revere Court	C	668	N/A	0.1230%	0.0963%	0.0730%	0.0572%
PHASE II	511	C106	35 Revere Court	B	537	N/A	0.0989%	0.0774%	0.0587%	0.0460%
PHASE II	512	C106	36 Revere Court	B	537	N/A	0.0989%	0.0774%	0.0587%	0.0460%
PHASE II	513	C106	37 Revere Court	C	668	N/A	0.1230%	0.0963%	0.0730%	0.0572%
PHASE II	514	C106	38 Revere Court	C	668	N/A	0.1230%	0.0963%	0.0730%	0.0572%
PHASE II	515	C106	39 Revere Court	B	537	N/A	0.0989%	0.0774%	0.0587%	0.0460%
PHASE II	516	C106	40 Revere Court	B	537	N/A	0.0989%	0.0774%	0.0587%	0.0460%
PHASE II	517	C106	41 Revere Court	C	668	N/A	0.1230%	0.0963%	0.0730%	0.0572%
PHASE II	518	C106	42 Revere Court	C	668	N/A	0.1230%	0.0963%	0.0730%	0.0572%
PHASE II	519	C106	43 Revere Court	B	537	N/A	0.0989%	0.0774%	0.0587%	0.0460%
PHASE II	520	C106	44 Revere Court	B	537	N/A	0.0989%	0.0774%	0.0587%	0.0460%
PHASE II	521	C106	45 Revere Court	C	668	N/A	0.1230%	0.0963%	0.0730%	0.0572%
PHASE II	522	C106	46 Revere Court	C	668	N/A	0.1230%	0.0963%	0.0730%	0.0572%
PHASE II	523	C106	47 Revere Court	B	537	N/A	0.0989%	0.0774%	0.0587%	0.0460%
PHASE II	524	C106	48 Revere Court	B	537	N/A	0.0989%	0.0774%	0.0587%	0.0460%
PHASE II	525	C106	49 Revere Court	C	668	N/A	0.1230%	0.0963%	0.0730%	0.0572%

PHASE II	526	C107	50 Revere Court	C	668	N/A	0.1230%	0.0963%	0.0730%	0.0572%
PHASE II	527	C107	51 Revere Court	B	537	N/A	0.0989%	0.0774%	0.0587%	0.0460%
PHASE II	528	C107	52 Revere Court	B	537	N/A	0.0989%	0.0774%	0.0587%	0.0460%
PHASE II	529	C107	53 Revere Court	C	668	N/A	0.1230%	0.0963%	0.0730%	0.0572%
PHASE II	530	C107	54 Revere Court	C	668	N/A	0.1230%	0.0963%	0.0730%	0.0572%
PHASE II	531	C107	55 Revere Court	B	537	N/A	0.0989%	0.0774%	0.0587%	0.0460%
PHASE II	532	C107	56 Revere Court	B	537	N/A	0.0989%	0.0774%	0.0587%	0.0460%
PHASE II	533	C107	57 Revere Court	C	668	N/A	0.1230%	0.0963%	0.0730%	0.0572%
PHASE II	534	C107	58 Revere Court	C	668	N/A	0.1230%	0.0963%	0.0730%	0.0572%
PHASE II	535	C107	59 Revere Court	B	537	N/A	0.0989%	0.0774%	0.0587%	0.0460%
PHASE II	536	C107	60 Revere Court	B	537	N/A	0.0989%	0.0774%	0.0587%	0.0460%
PHASE II	537	C107	61 Revere Court	C	668	N/A	0.1230%	0.0963%	0.0730%	0.0572%
PHASE II	538	C107	62 Revere Court	C	668	N/A	0.1230%	0.0963%	0.0730%	0.0572%
PHASE II	539	C107	63 Revere Court	B	537	N/A	0.0989%	0.0774%	0.0587%	0.0460%
PHASE II	540	C107	64 Revere Court	B	537	N/A	0.0989%	0.0774%	0.0587%	0.0460%
PHASE II	541	C107	65 Revere Court	C	668	N/A	0.1230%	0.0963%	0.0730%	0.0572%
					239284	N/A	100.0000%	78.2746%	59.3403%	46.5376%

PHASE III

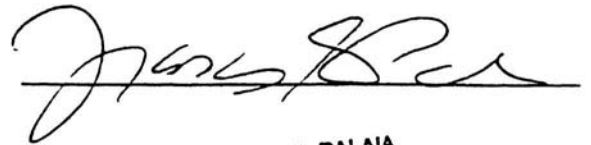
PHASE	NEW UNIT #	BLDG #	ADDRESS	UNIT TYPE	SQUARE FEET	PHASE ONE %	PHASE TWO %	PHASE THREE %	PHASE FOUR %	PHASE FIVE %
PHASE III	193	42	3 Laliq Drive	D	2622	N/A	N/A	0.3779%	0.2865%	0.2246%
PHASE III	194	42	5 Laliq Drive	B	1983	N/A	N/A	0.2858%	0.2166%	0.1699%
PHASE III	195	42	7 Laliq Drive	C-1	2316	N/A	N/A	0.3338%	0.2530%	0.1984%
PHASE III	196	42	9 Laliq Drive	D	2622	N/A	N/A	0.3779%	0.2865%	0.2246%
PHASE III	197	43	11 Laliq Drive	E	2602	N/A	N/A	0.3750%	0.2843%	0.2229%
PHASE III	198	43	15 Laliq Drive	C-1	2316	N/A	N/A	0.3338%	0.2530%	0.1984%
PHASE III	199	43	17 Laliq Drive	B	1983	N/A	N/A	0.2858%	0.2166%	0.1699%
PHASE III	200	43	19 Laliq Drive	C-2	2478	N/A	N/A	0.3571%	0.2707%	0.2123%
PHASE III	201	43	21 Laliq Drive	D	2622	N/A	N/A	0.3779%	0.2865%	0.2246%
PHASE III	202	44	23 Laliq Drive	D	2622	N/A	N/A	0.3779%	0.2865%	0.2246%
PHASE III	203	44	25 Laliq Drive	B	1983	N/A	N/A	0.2858%	0.2166%	0.1699%
PHASE III	204	44	27 Laliq Drive	C-2	2478	N/A	N/A	0.3571%	0.2707%	0.2123%
PHASE III	205	44	29 Laliq Drive	D	2622	N/A	N/A	0.3779%	0.2865%	0.2246%
PHASE III	206	45	28 Laliq Drive	D	2622	N/A	N/A	0.3779%	0.2865%	0.2246%
PHASE III	207	45	26 Laliq Drive	C-2	2478	N/A	N/A	0.3571%	0.2707%	0.2123%
PHASE III	208	45	24 Laliq Drive	B	1983	N/A	N/A	0.2858%	0.2166%	0.1699%
PHASE III	209	45	22 Laliq Drive	C-1	2316	N/A	N/A	0.3338%	0.2530%	0.1984%
PHASE III	210	45	20 Laliq Drive	E	2602	N/A	N/A	0.3750%	0.2843%	0.2229%
PHASE III	211	46	10 Laliq Drive	D	2622	N/A	N/A	0.3779%	0.2865%	0.2246%
PHASE III	212	46	8 Laliq Drive	C-2	2478	N/A	N/A	0.3571%	0.2707%	0.2123%
PHASE III	213	46	6 Laliq Drive	B	1983	N/A	N/A	0.2858%	0.2166%	0.1699%
PHASE III	214	46	4 Laliq Drive	C-2	2478	N/A	N/A	0.3571%	0.2707%	0.2123%

STATE OF NEW JERSEY:

SS

COUNTY OF Union :

BE IT REMEMBERED, that on this 12th day of May 1995, before me the subscriber, Notary Public, State of New Jersey personally appeared Brian M. Stolar who, I am satisfied, is the person who signed the within instrument as Vice President of Skyview Developers, Inc., the corporation named therein and thereupon he acknowledged that the said instrument made by the corporation and sealed with its corporate seal, was signed, sealed with the corporate seal and delivered by him as such officer and is the voluntary act and deed of the corporation made by virtue of authority from its Board of Directors.

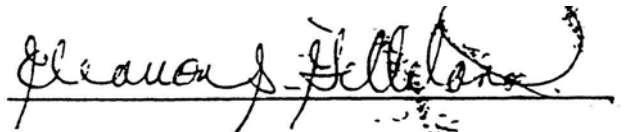


FRANCES E. PALAIA
NOTARY PUBLIC, STATE OF NEW JERSEY
ID # 2097183 - Qualified in Bergen County
MY COMMISSION EXPIRES FEB. 11, 1997

DATA\TEMP\GYS\209982.1

STATE OF NEW JERSEY :
SS
COUNTY OF ESSEX :

BE IT REMEMBERED, that on this 30 day of June, 1995, before me, the subscriber, a Notary Public of the State of New Jersey, personally appeared Brian M. Stolar, who, I am satisfied, is the person who signed the within instrument as Vice-President of Skyview Developers, Inc., the corporation named therein and thereupon he reacknowledged that the said instrument made by the corporation and sealed with its corporate seal was signed, sealed with the corporate seal and delivered by him as such officer and is the voluntary act and deed of the corporation made by virtue of authority from its Board of Directors.



ELEANOR S. GILLILAND
Notary Public of New Jersey
Commission Expires 5/01/1997